

Anti-REG1 α Antibody (Clone# AFB1689)

10/20

CATALOG NO.: A2236-100 (100 μ l)

BACKGROUND DESCRIPTION: This gene is a type I subclass member of the Reg gene family. The Reg gene family is a multigene family grouped into four subclasses, types I, II, III, and IV, based on the primary structures of the encoded proteins. This gene encodes a protein that is secreted by the exocrine pancreas. It is associated with islet cell regeneration and diabetogenesis and may be involved in pancreatic lithogenesis. Reg family members REG1B, REGL, PAP, and this gene are tandemly clustered on chromosome 2p12 and may have arisen from the same ancestral gene by gene duplication.

ALTERNATE NAMES: P19, PSP, PTP, REG, ICRF, PSPS, PSPS1

ANTIBODY TYPE: Monoclonal

CLONE: AFB1689

HOST/ISOTYPE: Mouse / IgG1

IMMUNOGEN: Purified recombinant fragment of human REG1A expressed in *E. Coli*

PURIFICATION: Affinity purified

FORM: Liquid

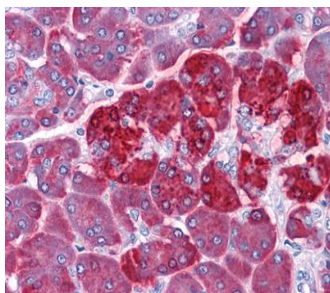
FORMULATION: In PBS, pH 7.4, 150 mM NaCl, 50% glycerol, 0.02% sodium azide

SPECIES REACTIVITY: Human

STORAGE CONDITIONS: Store at -20°C. Avoid freeze/thaw cycles

APPLICATIONS AND USAGE: IHC 1:200-1:1000

This information is only intended as a guide. The optimal dilutions must be determined by the user



Immunohistochemical analysis of paraffin embedded human pancreas using Anti-REG1 α antibody (Clone# AFB1689).

RELATED PRODUCTS:

recMAb™ Anti-p53 Antibody (A2224)
 Stat3 Antibody (3470R)
 IL-6 Antibody (5145)
 GSK-3b Antibody (3494)

FOR RESEARCH USE ONLY! Not to be used on humans.