

Anti-ATGL Antibody (Clone# ARC1192)

10/20

CATALOG NO.: A2238-100 (100 µl)

BACKGROUND DESCRIPTION: Adipose Triglyceride Lipase (ATGL) is a 54 kDa lipase that belongs to patatin-like phospholipase domain containing (PNPLA) family. It is highly expressed in white and brown adipose tissue whereas a lower expression is detected in other tissues such as the liver, skeletal muscle, lung, and heart. One of the main functions of ATGL is to catalyze the initial step of lipolysis which involves the conversion of triacylglycerol (TAG) to diacylglycerol (DAG). In immune cells (such as macrophages, neutrophils), ATGL promotes pro-inflammatory response by contributing to the production of IL-6 and arachidonic acid, which are precursors of eicosanoids. In non-immune cells (such as heart, adipose tissue, liver, skeletal muscle), it inhibits the production of proinflammatory cytokines and chemokines. ATGL is downregulated in multiple human cancers such as the pancreas, liver, and lung. Mutations in the ATGL gene are associated with neutral lipid storage disease with myopathy.

ALTERNATE NAMES: ATGL, TTS2, PEDF-R, FP17548, TTS-2.2, iPLA2zeta, 1110001C14Rik, PNPLA2, EC 3.1.1.3, Desnutrin, TTS2.2, IPLA2-Zeta

ANTIBODY TYPE: Monoclonal

CLONE: ARC1192

HOST/ISOTYPE: Rabbit / IgG

IMMUNOGEN: Synthetic peptide derived from human ATGL

MOLECULAR WEIGHT: 55 kDa

PURIFICATION: Affinity purified

FORM: Liquid

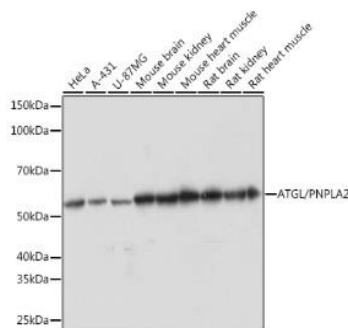
FORMULATION: In PBS with 0.02% sodium azide, 0.05% BSA, 50% glycerol, pH 7.3

SPECIES REACTIVITY: Human, Mouse, Rat

STORAGE CONDITIONS: Store at -20°C. Avoid freeze/thaw cycles

APPLICATIONS AND USAGE: WB 1:500 - 1:2000

This information is only intended as a guide. The optimal dilutions must be determined by the user



Western Blot analysis of various human cell lines, mouse and rat tissue extracts using Anti-ATGL antibody (Clone# ARC1192). 25 µg lysates were loaded per lane. Membrane was blocked with 3% non-fat dry milk in TBST. Primary antibody dilution used was 1:1000. HRP-conjugated Goat Anti-Rabbit IgG (H+L) was used as secondary antibody at a dilution of 1:10,000. Detection was performed using ECL Basic Kit. Exposure time was 1 min.

RELATED PRODUCTS:

AMPKα Antibody (3113)

TNF-alpha Antibody (3054)

PPAR-alpha Antibody (3585)

Superoxide Dismutase 2 (SOD-2) Antibody (2A1) (6169)

FOR RESEARCH USE ONLY! Not to be used on humans

Gentaur Europe BVBA Voortstraat 49, 1910 Kampenhout BELGIUM
 Tel 0032 16 58 90 45 info@gentaur.com

