

Anti-Mesothelin Antibody (Clone# MSLN/2131)

10/20

CATALOG NO.: A2240-100 (100 µg)

BACKGROUND DESCRIPTION: This gene encodes a preproprotein that is proteolytically processed to generate two protein products, megakaryocyte potentiating factor, and mesothelin. Megakaryocyte potentiating factor functions as a cytokine that can stimulate colony formation of bone marrow megakaryocytes. Mesothelin is a glycosylphosphatidylinositol-anchored cell-surface protein that may function as a cell adhesion protein. This protein is overexpressed in epithelial mesotheliomas, ovarian cancers, and in specific squamous cell carcinomas. Alternative splicing results in multiple transcript variants, at least one of which encodes an isoform that is proteolytically processed

ALTERNATE NAMES: MPF, SMRP, MSLN, CAK1

ANTIBODY TYPE: Monoclonal

CLONE: MSLN/2131

HOST/ISOTYPE: Mouse / IgG2b, kappa

IMMUNOGEN: Recombinant fragment (around aa 273-407) of human MSLN protein

PURIFICATION: Protein A/G purified

FORM: Liquid

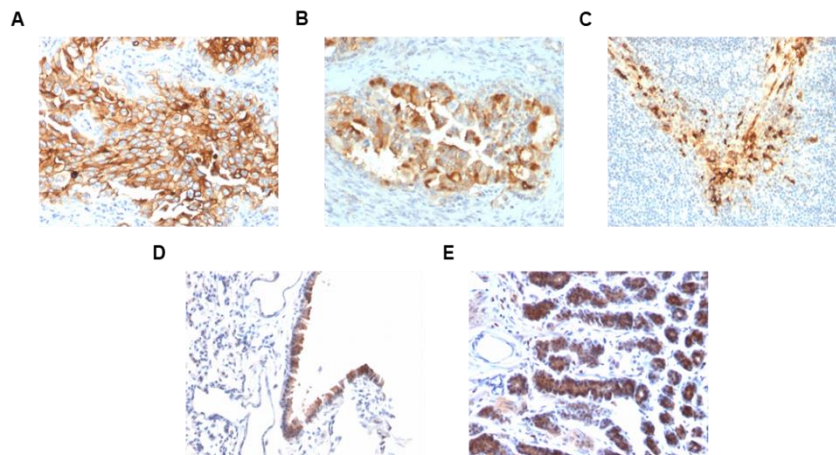
FORMULATION: In 10 mM PBS

SPECIES REACTIVITY: Human

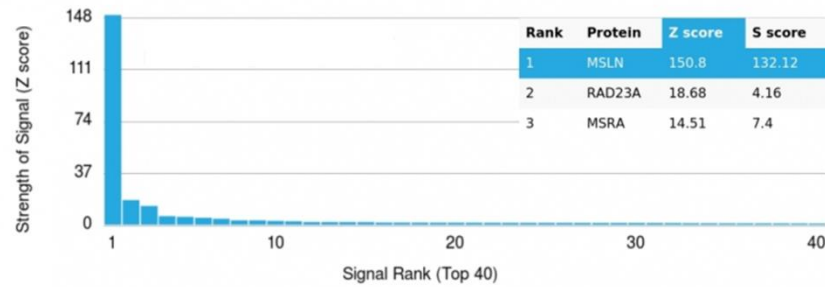
STORAGE CONDITIONS: Store at -20°C. Avoid freeze/thaw cycles

APPLICATIONS AND USAGE: IHC (1-2 µg/ml)

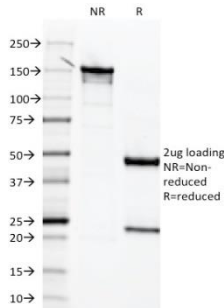
This information is only intended as a guide. The optimal dilutions must be determined by the user



Immunohistochemical analysis of paraffin embedded human lung mesothelioma (A), human endometrial carcinoma (B), human tonsil (C), mouse lung (D) and rat stomach (E) using Anti-Mesothelin antibody (Clone# MSLN/2131).



Protein Array analysis of > 19,000 full-length human proteins on HuProt™ array using the Anti-Mesothelin antibody (Clone# MSLN/2131). Protein array data is represented in the form of the Z-score and S-score. Z-score denotes the signal strength of a monoclonal antibody (in conjugation with fluorescently-tagged anti-IgG secondary antibody) that it produces when binding to a particular protein on an array. S-score denotes the specificity of a monoclonal antibody relative to the target protein. S-score is calculated as the difference between the Z-scores. If the S-score is > 2.5, then the monoclonal antibody is specific to its target protein of interest.



SDS-PAGE analysis to confirm the purity and integrity of Anti-Mesothelin antibody (Clone# MSLN/2131).

RELATED PRODUCTS:

recMAb™ Anti-GPC3 Antibody (A2190)
 Anti-Osteopontin (CT) (Clone 1F11) (5426)
 recMAb™ Anti-MUC1 Antibody (A2191)
 Anti-HER2/ErbB2 Antibody (A2212)

FOR RESEARCH USE ONLY! Not to be used on humans.