

recMAb™ Anti-Osteopontin Antibody

11/20

CATALOG NO.: A2241-100 (100 µg)

BACKGROUND DESCRIPTION: The protein encoded by this gene is involved in the attachment of osteoclasts to the mineralized bone matrix. The encoded protein is secreted and binds hydroxyapatite with high affinity. The osteoclast vitronectin receptor is found in the cell membrane and may be involved in the binding to this protein. This protein is also a cytokine that upregulates the expression of interferon-gamma and interleukin-12. Several transcript variants encoding different isoforms have been found for this gene.

ALTERNATE NAMES: OPN, BNSP, BSPI, ETA-1, SPP1, Uropontin, Nephropontin

ANTIBODY TYPE: Monoclonal

CLONE: 10A1

HOST/ISOTYPE: Rabbit / IgG

IMMUNOGEN: Synthetic peptide derived from human Osteopontin

MOLECULAR WEIGHT: 36 kDa

PURIFICATION: Affinity purified

FORM: Liquid

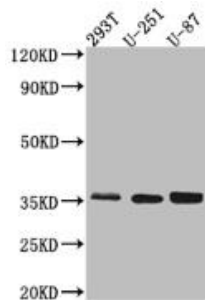
FORMULATION: In PBS, pH 7.4, 150 mM NaCl, 50% glycerol, 0.02% sodium azide

SPECIES REACTIVITY: Human

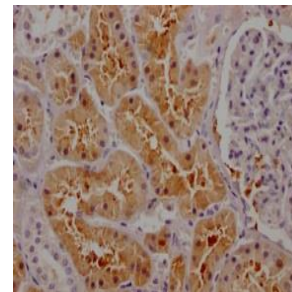
STORAGE CONDITIONS: Store at -20°C. Avoid freeze/thaw cycles

APPLICATIONS AND USAGE: WB 1:500-1:5000, IHC 1:50-1:200

This information is only intended as a guide. The optimal dilutions must be determined by the user



Western Blot analysis of 293T, U-251, and U-87 whole cell lysates was performed using recMAb™ Anti-Osteopontin antibody at a dilution of 1:1000. Goat polyclonal to rabbit IgG was used as secondary antibody at a dilution of 1:50,000.



Immunohistochemical analysis of paraffin-embedded human kidney tissue was performed using recMAb™ Anti-Osteopontin antibody at a dilution of 1:100. After dewaxing and hydration, the section was subjected to antigen retrieval in a citrate buffer (pH 6.0). The tissue section was blocked with 10% normal goat serum for 30 min at RT and then incubated with primary antibody (1% BSA) at 4°C overnight. HRP-conjugated Goat anti-rabbit IgG was used as secondary antibody and visualization was done using 0.05% DAB.

RELATED PRODUCTS:

FAK Antibody (3399)

Anti-human CD63 antibody (A1502)

Anti-Akt1 Rabbit Monoclonal Antibody (A1117)

Anti-Integrin β1 Antibody (A1669)