

recMAb™ Anti-CXCR4 Antibody

11/20

CATALOG NO.: A2243-100 (100 µl)

BACKGROUND DESCRIPTION: This gene encodes a CXC chemokine receptor specific for stromal cell-derived factor-1. The protein has 7 transmembrane regions and is located on the cell surface. It acts with the CD4 protein to support HIV entry into cells and is also highly expressed in breast cancer cells. Mutations in this gene have been associated with WHIM (warts, hypogammaglobulinemia, infections, and myelokathexis) syndrome. Alternate transcriptional splice variants, encoding different isoforms, have been characterized.

ALTERNATE NAMES: FB22, HM89, LAP3, LCR1, NPYR, WHIM, CD184, LAP-3, LESTR, NPY3R, NPYRL, WHIMS, HSY3RR, NPY3R, D2S201E, CXCR4

ANTIBODY TYPE: Monoclonal

CLONE: 2F10

HOST/ISOTYPE: Rabbit / IgG

IMMUNOGEN: Synthetic peptide derived from human CXCR4

PURIFICATION: Affinity purified

FORM: Liquid

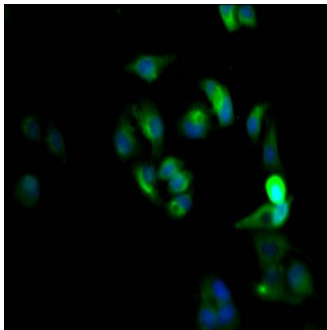
FORMULATION: In PBS, pH 7.4, 150 mM NaCl, 50% glycerol, 0.02% sodium azide

SPECIES REACTIVITY: Human

STORAGE CONDITIONS: Store at -20°C. Avoid freeze/thaw cycles

APPLICATIONS AND USAGE: IF 1:20-1:200

This information is only intended as a guide. The optimal dilutions must be determined by the user



Immunofluorescence staining of HeLa cells was performed with recMAb™ Anti-CXCR4 antibody at a dilution of 1:50. Fixation of the cells was done with 4% formaldehyde, followed by permeabilization with 0.2% TritonX-100, and blocking in 10% normal goat serum. The cells were then incubated with primary antibody overnight at 4°C. Nuclear DNA was labeled in blue with DAPI. FITC-conjugated Goat Anti-Rabbit IgG (H+L) was used as secondary antibody.

RELATED PRODUCTS:

SDF1 alpha Antibody (6691)

IL-10 Antibody (6638)

Anti-GRK2 Antibody (A1993)

TNF-alpha Antibody (3053R)

FOR RESEARCH USE ONLY! Not to be used on humans.