

Anti-SFTPD Antibody

CATALOG NO.: A2253-100 (100 µl)

BACKGROUND DESCRIPTION: Surfactant protein D is a 43 kDa glycoprotein that belongs to the family of collectins, which are a group of collagen-containing C-type lectins. The protein is synthesized and secreted by alveolar type II cells and non-ciliated airway cells. The gene for SP-D, SFTPD, is located on the long arm of the chromosome 10q22.2-23.1. SFTPD plays a significant role in innate immune response and protects the lungs from inhaled microorganisms, toxins, and organic antigens. It binds to a variety of phospholipids, polysaccharides, and glycolipids located on the surface of bacteria, viruses, and allergens and promote the killing of these pathogens by phagocytosis. Increased levels of SP-D are associated with the development, progression, and severity of pulmonary diseases such as COPD, idiopathic pulmonary fibrosis, and acute respiratory distress syndrome (ARDS). Therefore it is considered a promising biomarker for lung inflammation and pulmonary diseases

ALTERNATE NAMES: SP-D, PSP-D, SFTP4, COLEC7, SFTPD

ANTIBODY TYPE: Polyclonal

HOST/ISOTYPE: Rabbit / IgG

IMMUNOGEN: Fusion protein of Human SFTPD

PURIFICATION: Antigen Affinity purified

FORM: Liquid

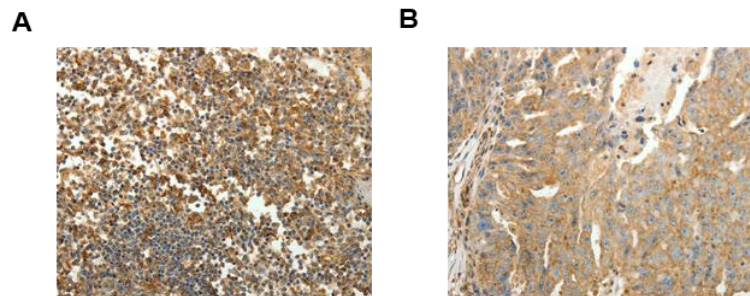
FORMULATION: In PBS, pH 7.4, 40% glycerol, 0.05% sodium azide

SPECIES REACTIVITY: Human

STORAGE CONDITIONS: Store at -20°C. Avoid freeze/thaw cycles

APPLICATIONS AND USAGE: IHC 1:25-1:100

This information is only intended as a guide. The optimal dilutions must be determined by the user



Immunohistochemical analysis of paraffin embedded human tonsil (A), and human ovarian cancer (B) tissues using Anti-SFTPD antibody at dilution of 1:30 (Magnification: 200x).

RELATED PRODUCTS:

Anti-Caspase-3 Antibody (Clone#AMC0213) (A2015)
 TGF-alpha Antibody (5339)
 EGFR Antibody (3782)
 recMAb™ Anti-MUC1 Antibody (A2191)

FOR RESEARCH USE ONLY! Not to be used on humans.