

Anti-CHI3L1 Antibody

CATALOG NO.: A2254-100 (100 µl)

BACKGROUND DESCRIPTION: Chitinase 3-like 1 (CHI3L1, YKL-40) is a 40 kDa secreted glycoprotein that belongs to the glycoside hydrolase family 18. The protein is secreted by a variety of cells such as neutrophils, chondrocytes, macrophages, smooth muscle cells, and tumor cells. It contains a chitin-binding domain but lacks chitinase activity. The gene is located on chromosome 1q31-1q32. Genetic variations of CHI3L1 are associated with multiple inflammatory and neoplastic diseases. CHI3L1 plays a key role in protection against pathogens, inflammation, oxidant-, and antigen-induced injury responses, tissue repair. Higher levels of serum CHI3L1 are associated with poor prognosis and reduced survival in multiple cancers such as colon, gastric, breast, lung cancers, glioblastoma, sarcoma, and osteosarcoma. Increased levels of CHI3L1 are also associated with inflammatory conditions such as Crohn's disease, rheumatoid arthritis, asthma, and chronic obstructive pulmonary disease (COPD). Therefore, CHI3L1 could serve as an efficient therapeutic target for the treatment of human diseases

ALTERNATE NAMES: GP39, ASRT7, GP-39, YK-40, YKL40, CGP-39, YKL-40, YYL-40, HC-gp39, HCGP-3P, hCGP-39

ANTIBODY TYPE: Polyclonal

HOST/ISOTYPE: Rabbit / IgG

IMMUNOGEN: KLH-conjugated synthetic peptide targeting a sequence within the center region of human YKL-40

MOLECULAR WEIGHT: 43 kDa

PURIFICATION: Affinity purified

FORM: Liquid

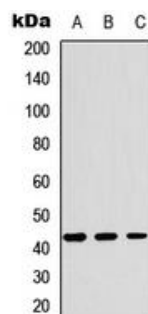
FORMULATION: In 0.42% Potassium phosphate; 0.87% NaCl; pH 7.3; 30% glycerol; and 0.01% sodium azide

SPECIES REACTIVITY: Human, Mouse, Rat

STORAGE CONDITIONS: Store at -20°C. Avoid freeze/thaw cycles

APPLICATIONS AND USAGE: WB 1:500 - 1:1000

This information is only intended as a guide. The optimal dilutions must be determined by the user



Western blot analysis of HEK293T (A), RAW264.7 (B), and H9C2 (C) whole cell lysates was performed using Anti-CHI3L1 antibody.

RELATED PRODUCTS:

Anti-Galectin-3 Antibody (Clone# 3F2E2) (A2232)

Anti-LCN2 Antibody (Clone# 3B1C10) (A2235)

TGF-β1 Antibody (5559)

Akt/PKB Antibody (3247)

FOR RESEARCH USE ONLY! Not to be used on humans.