

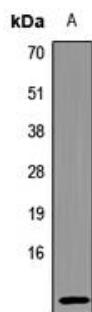
Anti-SCGB1A1 Antibody

CATALOG NO.: A2255-100 (100 µl)

BACKGROUND DESCRIPTION: Secretoglobin family 1A member 1 (SCGB1A1, CC16, CC10, Uteroglobin) is a steroid inducible, 15.8 kDa homodimeric protein that belongs to the secretoglobin family. It is secreted in large amounts from Clara cells, which are non-ciliated cells located in the respiratory and terminal bronchioles of the lungs. It is also found in other organs such as uterus, mammary gland, prostate gland and thymus. Although the exact biological function of this protein remains elusive, SCGB1A1 has been demonstrated to have both anti-inflammatory and anti-oxidative functions. SCGB1A1 can inhibit phospholipase A2 activity, as well as modulate IFN- γ signaling and Th2 mediated inflammatory responses. Increased levels of SCGB1A1 occur in the plasma of patients suffering from pulmonary sarcoidosis, pulmonary fibrosis, or with injured lungs as a result of exposure to irritants such as asbestos, fire smoke, ozone. On the other hand, low levels of SCGB1A1 occur in the plasma of cigarette smokers and patients suffering from asthma and obliterative bronchiolitis. Therefore, SCGB1A1 could potentially serve as an efficient therapeutic target for the treatment of pulmonary diseases and injuries

ALTERNATE NAMES:	UGB, UP1, CC10, CC16, CCSP, UP-1, CCPBP, SCGB1A1
ANTIBODY TYPE:	Polyclonal
HOST/ISOTYPE:	Rabbit / IgG
IMMUNOGEN:	Recombinant full length protein of human Uteroglobin
MOLECULAR WEIGHT:	10 kDa
PURIFICATION:	Affinity purified
FORM:	Liquid
FORMULATION:	In 0.42% Potassium phosphate; 0.87% NaCl; pH 7.3; 30% glycerol; and 0.01% sodium azide
SPECIES REACTIVITY:	Human, Mouse
STORAGE CONDITIONS:	Store at -20°C. Avoid freeze/thaw cycles
APPLICATIONS AND USAGE:	WB 1:500 - 1:2000

This information is only intended as a guide. The optimal dilutions must be determined by the user



Western blot analysis of mouse lung whole cell lysates was performed using Anti-SCGB1A1 antibody.

RELATED PRODUCTS:

Caspase-1 Antibody (3019)
 recMAb™ Anti-MUC1 Antibody (A2191)
 Anti-NLRP3 Antibody (A1767)
 Anti-SFTPD Antibody (A2254)

FOR RESEARCH USE ONLY! Not to be used on humans.