

Anti-LAG3 Antibody (Clone# LAG3/3261)

01/21

CATALOG NO.: A2275-100 (100 µg)

BACKGROUND DESCRIPTION: Lymphocyte-activation gene 3 (LAG3) is an immune checkpoint protein expressed on activated T cells, NK cells, B cells, and plasmacytoid dendritic cells. It acts as a negative regulator of T cells by suppressing their activation and inhibiting immune response. The T cell inhibition is caused by the binding of LAG3 to an antigen-presenting cell called MHC Class II. LAG3 is also involved in the maturation and activation of dendritic cells. LAG3 was found to be co-expressed with PD1 and caused T-cell exhaustion. LAG3 is highly expressed in tumor-infiltrating leukocytes (TILs) of various cancers, thereby making it a promising anti-cancer target.

ALTERNATE NAMES: CD223, LAG3, FDC, LAG-3

ANTIBODY TYPE: Monoclonal

CLONE: LAG3/3261

HOST/ISOTYPE: Mouse / IgG2a, kappa

IMMUNOGEN: Recombinant full-length human LAG3 protein

MOLECULAR WEIGHT: 70 kDa

PURIFICATION: Protein A/G purified

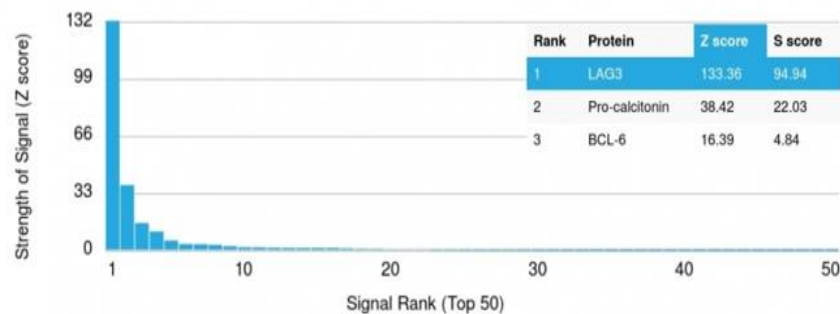
FORM: Liquid

FORMULATION: In 10 mM PBS

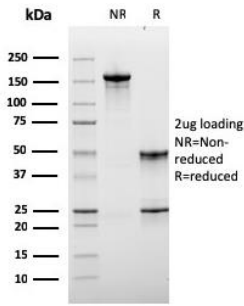
SPECIES REACTIVITY: Human

STORAGE CONDITIONS: Store at -20°C. Avoid freeze/thaw cycles

This information is only intended as a guide. The optimal dilutions must be determined by the user



Protein Array analysis of > 19,000 full-length human proteins on HuProt™ array using the Anti-LAG3 antibody (Clone# LAG3/3261). Protein array data is represented in the form of the Z-score and S-score. Z-score denotes signal strength of a monoclonal antibody (in conjugation with fluorescently-tagged anti-IgG secondary antibody) which it produces when binding to a particular protein on an array. S-score denotes the specificity of a monoclonal antibody relative to the target protein. S-score is calculated as the difference between the Z-scores. If the S-score is > 2.5, then the monoclonal antibody is specific to its target protein of interest.



SDS-PAGE analysis to confirm the purity and integrity of Anti-LAG3 antibody (Clone# LAG3/3261).

RELATED PRODUCTS:

- Anti-PD-1 Antibody (A1384)
- Anti-PD-L1 (CD274) (B7-H1), Rabbit Monoclonal Antibody (A1824)
- Anti-CD276 Antibody (6A1) (A1070)
- Anti-CTLA4 Antibody (A1083)

FOR RESEARCH USE ONLY! Not to be used on humans.