

recMAb™ Anti-KIM-1 Antibody

01/21

CATALOG NO.: A2276-100 (100 µl)

BACKGROUND DESCRIPTION: Kidney Injury Molecule-1 (KIM-1, HAVCR1) is a class I integral membrane glycoprotein that belongs to the TIM family of proteins. The protein encoded by this gene acts as a membrane receptor for both the human hepatitis A virus (HHA) and TIMD4. KIM-1 is expressed in multiple tissues but is primarily expressed on Th2 cells and induces T cell activation. It may be involved in the moderation of asthma and allergic diseases. KIM-1 protein is expressed in > 90% of renal cell carcinoma tumors. Alternative splicing of this gene results in multiple transcript variants.

ALTERNATE NAMES: TIM, KIM1, TIM1, CD365, HAVCR, KIM-1, TIM-1, TIMD1, TIMD-1, HAVCR-1

ANTIBODY TYPE: Monoclonal

CLONE: 9E1

HOST/ISOTYPE: Recombinant / IgG

IMMUNOGEN: Synthetic peptide derived from human KIM-1

MOLECULAR WEIGHT: 50 kDa

PURIFICATION: Affinity purified

FORM: Liquid

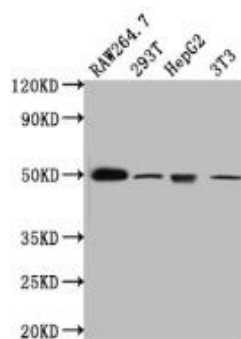
FORMULATION: In PBS, pH 7.4, 150 mM NaCl, 50% glycerol, 0.02% sodium azide

SPECIES REACTIVITY: Human, Mouse

STORAGE CONDITIONS: Store at -20°C. Avoid freeze/thaw cycles

APPLICATIONS AND USAGE: WB (1:500-1:5000)

This information is only intended as a guide. The optimal dilutions must be determined by the user



Western blot analysis of RAW264.7, 293T, HepG2, and NIH/3T3 whole cell lysates was performed using recMAb™ Anti-KIM-1 antibody.

RELATED PRODUCTS:

Galectin-9 Antibody (3827)
 Anti-TIM3 Antibody (IHC003) (A1550)
 IL-6 Antibody (5145)
 Anti-STAT3 Antibody (A1670)

FOR RESEARCH USE ONLY! Not to be used on humans.