

Anti-GLO1 Rabbit Monoclonal Antibody

CATALOG NO.: A2277-100 (100 µl)

BACKGROUND DESCRIPTION: The enzyme encoded by this gene is responsible for the catalysis and formation of S-lactoyl-glutathione from methylglyoxal condensation and reduced glutathione. Glyoxalase I is linked to HLA and is localized to 6p21.3-p21.1, between HLA and the centromere.

ALTERNATE NAMES: GLYI, GLOD1, HEL-S-74, GLO1, Glyoxalase I, Glx I, EC 4.4.1.5

ANTIBODY TYPE: Monoclonal

HOST/ISOTYPE: Rabbit / IgG

IMMUNOGEN: Synthetic peptide derived from human GLO1 protein

MOLECULAR WEIGHT: 22 kDa

PURIFICATION: Affinity purified

FORM: Liquid

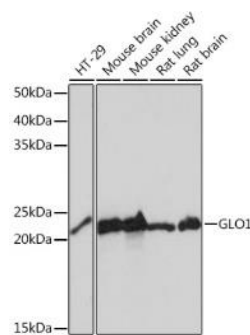
FORMULATION: In PBS with 0.02% sodium azide, 0.05% BSA, 50% glycerol, pH 7.3

SPECIES REACTIVITY: Human, Mouse, Rat

STORAGE CONDITIONS: Store at -20°C. Avoid freeze/thaw cycles

APPLICATIONS AND USAGE: WB (1:500 - 1:2000)

This information is only intended as a guide. The optimal dilutions must be determined by the user



Western blot analysis of HT-29, mouse brain, mouse kidney, rat lung, and rat brain whole cell lysates was performed using Anti-GLO1 Rabbit Monoclonal antibody. 25 µg lysates were loaded per lane. 3% nonfat dry milk in TBST was used as blocking buffer. Primary antibody dilution used was 1:1000. HRP Goat Anti-Rabbit IgG (H+L) was used as secondary antibody at 1:10000 dilution. Detection was performed using ECL Basic Kit. Exposure time was 5s.

RELATED PRODUCTS:

Anti-AKR1B1 Antibody (A1746)
 Aldolase C (ALDOC) Antibody (CT) Clone # 859CT9.5.3 (6755)
 Anti-PGAM1 Antibody (Clone# ARC0913) (A2130)
 FABP5 Antibody (5505)

FOR RESEARCH USE ONLY! Not to be used on humans.