

Anti-XRCC1 Rabbit Monoclonal Antibody

01/21

CATALOG NO.: A2278-100 (100 µl)

BACKGROUND DESCRIPTION: The protein encoded by this gene is involved in the efficient repair of DNA single-strand breaks formed by exposure to ionizing radiation and alkylating agents. This protein interacts with DNA ligase III, polymerase beta, and poly (ADP-ribose) polymerase to participate in the base excision repair pathway. It may play a role in DNA processing during meiosis and recombination in germ cells. A rare microsatellite polymorphism in this gene is associated with cancer in patients of varying radiosensitivity.

ALTERNATE NAMES: RCC, SCAR26, XRCC1

ANTIBODY TYPE: Monoclonal

HOST/ISOTYPE: Rabbit / IgG

IMMUNOGEN: Synthetic peptide derived from human XRCC1 protein

MOLECULAR WEIGHT: 82 kDa

PURIFICATION: Affinity purified

FORM: Liquid

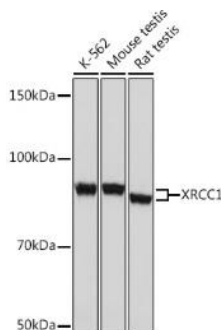
FORMULATION: In PBS with 0.02% sodium azide, 0.05% BSA, 50% glycerol, pH 7.3

SPECIES REACTIVITY: Human, Mouse, Rat

STORAGE CONDITIONS: Store at -20°C. Avoid freeze/thaw cycles

APPLICATIONS AND USAGE: WB (1:500 - 1:2000)

This information is only intended as a guide. The optimal dilutions must be determined by the user



Western blot analysis of K-562, mouse testis, and rat testis whole cell lysates was performed using Anti-XRCC1 Rabbit Monoclonal antibody. 25 µg lysates were loaded per lane. 3% nonfat dry milk in TBST was used as blocking buffer. Primary antibody dilution used was 1:1000. HRP Goat Anti-Rabbit IgG (H+L) was used as secondary antibody at 1:10000 dilution. Detection was performed using ECL Basic Kit. Exposure time was 5s.

RELATED PRODUCTS:

Anti-ERCC1 Antibody (A1937)
 Anti-XRCC3 Antibody (A1176)
 Anti-PARP Antibody (2B6) (A1109)
 Anti-DNA-PK Antibody (A1977)

FOR RESEARCH USE ONLY! Not to be used on humans.