

Anti-HIPK3 Antibody

01/21

CATALOG NO.: A2280-100 (100 µg)

BACKGROUND DESCRIPTION: Homeodomain-Interacting Protein Kinase 3 (HIPK3) is a serine/threonine kinase that belongs to the family of Homeodomain-Interacting Protein Kinase. It plays an important in multiple cellular processes such as proliferation, DNA-damage response, oxidative stress, and development. It is also involved in the regulation of transcription, apoptosis, and expression of steroidogenic genes. It is highly expressed in the heart and skeletal muscle but lowly expressed in other tissues such as the pancreas, brain, spleen, thymus, testis, small intestine, and colon. It is found overexpressed in multidrug-resistant cells. Knockdown of HIPK3 in mice leads to glucose intolerance, impaired insulin secretion, and increased apoptosis of the pancreatic β -cells. Recent studies have demonstrated that circular RNA of HIPK3 is expressed in multiple diseases such as diabetes, cancer, age-related cataract, and idiopathic pulmonary fibrosis and may serve as a promising biomarker to study disease development and progression.

ALTERNATE NAMES: PKY, YAK1, DYRK6, FIST3, HIPK3, EC 2.7.11.1, ANPK, FIST

ANTIBODY TYPE: Polyclonal

HOST/ISOTYPE: Rabbit / IgG

IMMUNOGEN: Recombinant Human HIPK3 protein (aa 841-1130)

PURIFICATION: Protein G purified

FORM: Liquid

FORMULATION: In 0.01 M PBS, pH 7.4, 50% Glycerol, 0.03% proclin 300

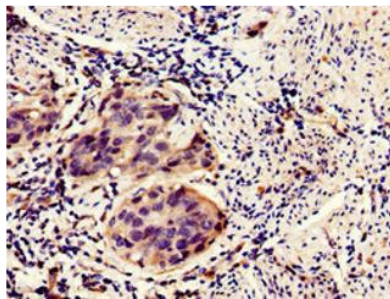
SPECIES REACTIVITY: Human

STORAGE CONDITIONS: Store at -20°C. Avoid freeze/thaw cycles

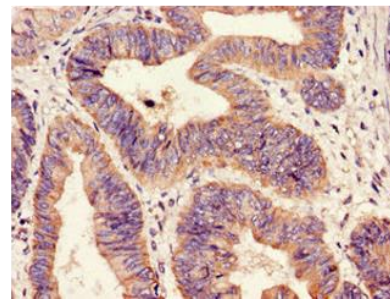
APPLICATIONS AND USAGE: IHC (1:20-1:200), IF (1:50-1:200)

This information is only intended as a guide. The optimal dilutions must be determined by the user

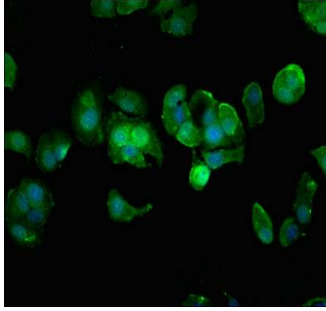
A



B



Immunohistochemical analysis of paraffin embedded human bladder cancer (A), human colon cancer (B) using Anti-HIPK3 antibody at a dilution of 1:100



Immunofluorescence analysis of MCF-7 cells was performed using Anti-HIPK3 antibody at a dilution of 1:100. Alexa Fluor 488 conjugated Goat Anti-Rabbit IgG (H+L) was used as secondary antibody

RELATED PRODUCTS:

Anti-E-Cadherin (CDH1) Rabbit Monoclonal Antibody (A1126)
Anti-Bax Antibody (BAX/962) (A1434)
LIMK2 Antibody (3584)
Anti-STAT3 Antibody (A1670)

FOR RESEARCH USE ONLY! Not to be used on humans.