

Anti-DPYD Antibody

01/21

CATALOG NO.: A2281-100 (100 µl)

BACKGROUND DESCRIPTION: The protein encoded by this gene is a pyrimidine catabolic enzyme and the initial and rate-limiting factor in the pathway of uracil and thymidine catabolism. Mutations in this gene result in dihydropyrimidine dehydrogenase deficiency, an error in pyrimidine metabolism associated with thymine-uraciluria and an increased risk of toxicity in cancer patients receiving 5-fluorouracil chemotherapy. Two transcript variants encoding different isoforms have been found for this gene.

ALTERNATE NAMES: DHP, DPD, DHPDHASE, DPYD, EC 1.3.1.2

ANTIBODY TYPE: Polyclonal

HOST/ISOTYPE: Rabbit / IgG

IMMUNOGEN: KLH-conjugated synthetic peptide targeting a sequence within the center region of human DPYD

MOLECULAR WEIGHT: 110 kDa

PURIFICATION: Affinity purified

FORM: Liquid

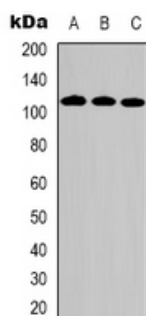
FORMULATION: In 0.42% Potassium phosphate; 0.87% NaCl; pH 7.3; 30% glycerol; and 0.01% sodium azide

SPECIES REACTIVITY: Human

STORAGE CONDITIONS: Store at -20°C. Avoid freeze/thaw cycles

APPLICATIONS AND USAGE: WB (1:500 - 1:1000)

This information is only intended as a guide. The optimal dilutions must be determined by the user



Western blot analysis of HeLa (A), HepG2 (B), and Jurkat (C) whole cell lysates was performed using Anti-DPYD antibody.

RELATED PRODUCTS:

Anti-SP1 Antibody (A1999)
 Anti-UGT1A1 Antibody (A2279)
 recMAb™ Anti-p53 Antibody (A2224)
 EGFR Antibody (3782)

FOR RESEARCH USE ONLY! Not to be used on humans.