

Anti-FOLR1 Antibody

01/21

CATALOG NO.: A2282-100 (100 µg)

BACKGROUND DESCRIPTION: The protein encoded by this gene is a member of the folate receptor family. Members of this gene family bind folic acid and its reduced derivatives, and transport 5-methyltetrahydrofolate into cells. This gene product is a secreted protein that either anchors to membranes via a glycosyl-phosphatidylinositol linkage or exists in a soluble form. Mutations in this gene have been associated with neurodegeneration due to cerebral folate transport deficiency. Due to the presence of two promoters, multiple transcription start sites, and alternative splicing, multiple transcript variants encoding the same protein have been found for this gene.

ALTERNATE NAMES: FBP, FOLR, NCFTD, FRalpha, FOLR1, FR α , KB Cells FBP

ANTIBODY TYPE: Polyclonal

HOST/ISOTYPE: Rabbit / IgG

IMMUNOGEN: Recombinant Human FOLR1 protein

PURIFICATION: Protein G purified

FORM: Liquid

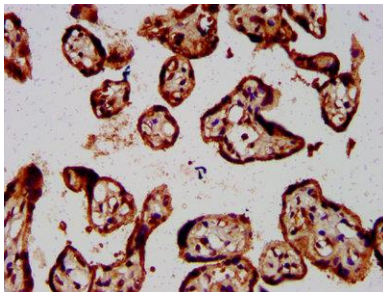
FORMULATION: In 0.01 M PBS, pH 7.4, 50% Glycerol, 0.03% proclin 300

SPECIES REACTIVITY: Human

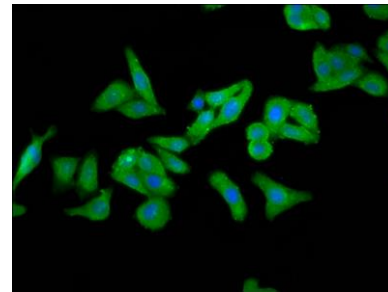
STORAGE CONDITIONS: Store at -20°C. Avoid freeze/thaw cycles

APPLICATIONS AND USAGE: IHC (1:500-1:1000), IF (1:200-1:500)

This information is only intended as a guide. The optimal dilutions must be determined by the user



Immunohistochemical analysis of paraffin embedded human placenta using Anti-FOLR1 antibody at 1:800 dilution. Antigen retrieval was performed at high pressure in citrate buffer (pH 6.0). Tissue was blocked with 10% goat serum for 30 min at RT, followed by overnight incubation with primary antibody (1% BSA) at 4°C. Biotinylated secondary antibody was used to detect primary antibody and visualized using HRP conjugated SP system.



Immunofluorescence analysis of HepG2 cells was performed using Anti-FOLR1 antibody at a dilution of 1:266. Fixation of the cells was performed using 4% formaldehyde, followed by permeabilization with 0.2% Triton X-100. Cells were blocked in 10% goat serum and incubated overnight with primary antibody at 4°C. Alexa Fluor 488 conjugated Goat Anti-Rabbit IgG (H+L) was used as secondary antibody.

RELATED PRODUCTS:

Sox-2 Antibody (Clone # 57CT23.3.4) (6772)

Anti-PAX3 Antibody (A1657)

Anti-KLF4 Antibody (A1684)

Oct-4 Antibody (3576)

FOR RESEARCH USE ONLY! Not to be used on humans.