

# Anti-FAP Antibody

**CATALOG NO.:** A2287-100 (100 µg)

**BACKGROUND DESCRIPTION:** The protein encoded by this gene is a homodimeric integral membrane gelatinase belonging to the serine protease family. It is selectively expressed in reactive stromal fibroblasts of epithelial cancers, granulation tissue of healing wounds, and malignant cells of bone and soft tissue sarcomas. This protein is thought to be involved in the control of fibroblast growth or epithelial-mesenchymal interactions during development, tissue repair, and epithelial carcinogenesis. Alternatively spliced transcript variants encoding different isoforms have been found for this gene.

**ALTERNATE NAMES:** FAPA, SIMP, DPPIV, FAPalpha, FAP, Seprase, EC 3.4.21.26, EC 3.4.14.5

**ANTIBODY TYPE:** Polyclonal

**HOST/ISOTYPE:** Rabbit / IgG

**IMMUNOGEN:** Synthetic peptide derived from the internal region of Human FAP

**MOLECULAR WEIGHT:** 90 kDa

**PURIFICATION:** Affinity chromatography using epitope specific immunogen

**FORM:** Liquid

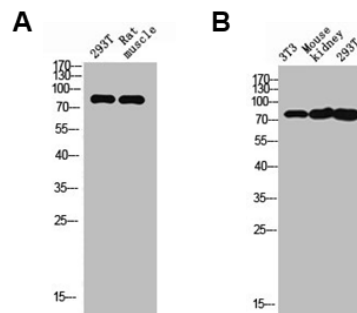
**FORMULATION:** In 0.01 M PBS, pH 7.4, 50% Glycerol, 0.03% proclin 300

**SPECIES REACTIVITY:** Human, Mouse, Rat

**STORAGE CONDITIONS:** Store at -20°C. Avoid freeze/thaw cycles

**APPLICATIONS AND USAGE:** WB (1:500-1:2000)

This information is only intended as a guide. The optimal dilutions must be determined by the user



Western blot analysis of 293T, rat muscle (A) and 3T3, mouse kidney, 293T (B) whole cell lysates was performed using Anti-FAP antibody.

**RELATED PRODUCTS:**

PI3 kinase Antibody (3959)

AKT1 Antibody (CT) (6744)

NFκB p65 Antibody (3038)

Anti-Catenin, beta Antibody (CTNNB1/1507) (A1467)

**FOR RESEARCH USE ONLY! Not to be used on humans.**