

# Anti-IFNAR1 Antibody

01/21

---

**CATALOG NO.:** A2288-100 (100 µg)
 

---

**BACKGROUND DESCRIPTION:** The protein encoded by this gene is a type I membrane protein that forms one of the two chains of a receptor for interferons alpha and beta. Binding and activation of the receptor stimulate Janus protein kinases, which in turn phosphorylate several proteins, including STAT1 and STAT2. The protein belongs to the type II cytokine receptor family and functions as an antiviral factor.

**ALTERNATE NAMES:** AVP, IFRC, IFNAR, IFNBR, IFN-alpha-REC, IFNAR1, IFN-R-1, CRF2-1

**ANTIBODY TYPE:** Polyclonal

**HOST/ISOTYPE:** Rabbit / IgG

**IMMUNOGEN:** Synthetic peptide derived from Human IFNAR1 protein

**PURIFICATION:** Affinity chromatography using epitope specific immunogen

**FORM:** Liquid

**FORMULATION:** In PBS, pH 7.4, 50% Glycerol, 0.03% proclin 300

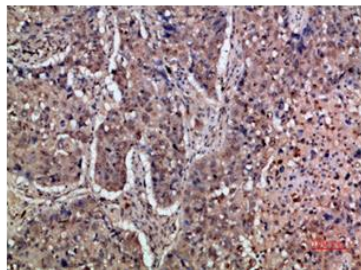
**SPECIES REACTIVITY:** Human

**STORAGE CONDITIONS:** Store at -20°C. Avoid freeze/thaw cycles

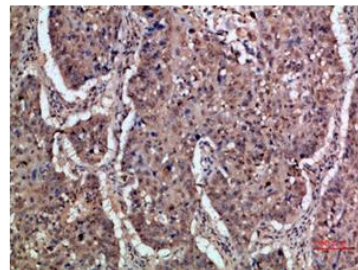
**APPLICATIONS AND USAGE:** IHC (1:50-300)

This information is only intended as a guide. The optimal dilutions must be determined by the user

A



B



Immunohistochemical analysis of paraffin embedded human lung cancer (A and B) using Anti-IFNAR1 antibody at a dilution of 1:200.

**RELATED PRODUCTS:**

IFN alpha Antibody (5595R)

Stat2 Antibody (3468R)

Anti-STAT1 Antibody (A1215)

PTP1B Antibody (Clone 107AT531) (3122)

**FOR RESEARCH USE ONLY! Not to be used on humans.**