

Ebola GP1 Surface Protein Humanized Antibody (Ansuvimab)

02/21

CATALOG NO.: **A2298-50 (50 µg)**
 A2298-100 (100 µg)

BACKGROUND DESCRIPTION: This research-grade biosimilar is a humanized antibody that targets the envelope glycoprotein of Ebola virus. Infection with pathogenic filoviruses such as Ebola can cause severe hemorrhagic fever in humans, with fatality rates as high as 90%. The envelope glycoprotein complex is responsible for the viral entry into host cells via binding to host surface receptors. The most successful methods for treatment of Ebola involve the targeting of its surface glycoproteins. The original humanized monoclonal antibody was shown to successfully treat Ebola patients, with improved patient survival and more efficient viral clearance.

ALTERNATE NAMES: GP; GP1; GP2; Shed GP; Second secreted glycoprotein; small secreted glycoprotein

ANTIBODY TYPE: Monoclonal

HOST/ISOTYPE: Recombinant / IgG1

SOURCE: XtenCHO cells

IMMUNOGEN: Envelope glycoprotein of Ebola virus

CAS NUMBER: 2375952-29-5

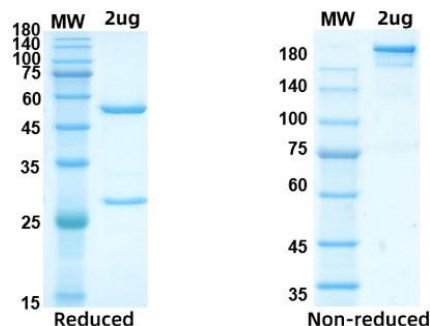
FORM: Liquid

FORMULATION: In PBS, pH 7.5

SPECIES REACTIVITY: Ebola Virus

STORAGE CONDITIONS: Store at -80 °C. Avoid repeated freeze-thaw cycles

This information is only intended as a guide. The optimal dilutions must be determined by the user



RELATED PRODUCTS:

Anti-SARS-CoV-2 RBD (Bamlanivimab), Humanized Antibody (Cat. No. A2292)
 Anti-Flavivirus Group Antigen, Human IgG1 Antibody (Cat. No. A1102)
 Anti-CoV-2, MERS & SARS-CoV NP Mouse IgG1 Antibody (Cat. No. A2063)
 Anti-Flavivirus Group Antigen Antibody (Cat. No. A1146)
 Human CellExp™ Ebolavirus BDBV Small/secreted Glycoprotein (sGP) Recombinant (Cat. No. P1059)
 Anti-Influenza B Virus Polyclonal Antibody (Cat. No. A2086)

FOR RESEARCH USE ONLY! Not to be used on humans.