

# CCR6 Antibody

**CATALOG NO.:** A2299-50 (50 µg)  
A2299-100 (100 µg)

**BACKGROUND DESCRIPTION:** C-C chemokine receptor type 6 (CCR6) is the receptor for the CCL20 chemokine as well as beta-defensins. CCR6 is responsible for the chemotaxis of dendritic cells as well as B and T lymphocytes, inflammation and immune responses, and wound healing. CCR6 has been associated with Crohn's disease, and is also implicated in tumor progression due to recruitment of macrophages and other immune cells to the tumor microenvironment, particularly in gastrointestinal malignancies such as colorectal cancer.

**ALTERNATE NAMES:** BN-1; C-C CKR-6; CCR-6; CD196; CKR-L3; CMKBR6; DCR2; DRY6; GPR29; GPRCY4; STRL22

**ANTIBODY TYPE:** Rabbit Polyclonal

**HOST/ISOTYPE:** Rabbit / IgG

**IMMUNOGEN:** Synthetic peptide corresponding to the C-terminus of human CCR6

**PURIFICATION:** Affinity purified

**MOLECULAR WEIGHT:** 42 kDa calculated; 52 kDa observed

**FORM:** Liquid

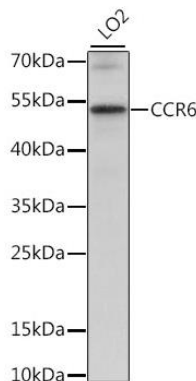
**FORMULATION:** In PBS with 0.02% sodium azide, 50% glycerol, pH 7.3

**SPECIES REACTIVITY:** Human

**STORAGE CONDITIONS:** Store at -20 °C. Avoid repeated freeze-thaw cycles

**APPLICATIONS:** Western Blot (WB): 1:500 to 1:2000 dilution

**This information is only intended as a guide. The optimal dilutions must be determined by the user**



Western blot analysis of LO2 cell lysate using CCR6 antibody

## RELATED PRODUCTS:

CCR4 Antibody (Cat. No. 3817)  
 CCR10 Antibody (Cat. No. 5210)  
 CCR3 Antibody (Cat. No. 3416R)  
 CCR2 Antibody (Cat. No. 3415R)  
 CCR1 Antibody (Cat. No. 3414)  
 Anti-CCR8 Antibody (Clone# ARC0956) (Cat. No. A2135)

**FOR RESEARCH USE ONLY! Not to be used on humans.**