

CD103 / ITGAE Antibody

CATALOG NO.: A2300-50 (50 µg)
A2300-100 (100 µg)

BACKGROUND DESCRIPTION: ITGAE, also known as CD103, is an integrin that pairs with the beta 7 integrin to form the human mucosal lymphocyte-1 antigen. ITGAE is preferentially expressed in human intestinal intraepithelial lymphocytes (IEL). It has a role in adhesion and may serve as an accessory molecule for IEL activation. ITGAE has been associated with diseases such as hairy cell leukemia and splenic marginal zone lymphoma. The presence of cytotoxic T cells positive for CD103 expression has been linked to prolonged survival in several malignancies, including gastric cancer, and is currently being explored as a prognostic biomarker as well as a potential therapeutic target.

ALTERNATE NAMES: ITGAE; Mucosal Lymphocyte 1 Antigen; HML-1 Antigen; Integrin Subunit Alpha E; HUMINAE

ANTIBODY TYPE: Rabbit polyclonal

HOST/ISOTYPE: Rabbit / IgG

IMMUNOGEN: Human CD103 peptide sequence (amino acids 19 to 200)

PURIFICATION: Affinity purification

MOLECULAR WEIGHT: 130 kDa calculated; 110 kDa observed

FORM: Liquid

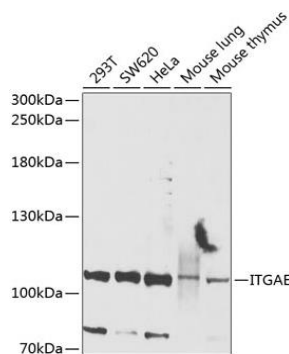
FORMULATION: In PBS with 0.02% sodium azide, 50% glycerol, pH 7.3

SPECIES REACTIVITY: Human, Mouse, Rat

STORAGE CONDITIONS: Store at -20 °C. Avoid repeated freeze-thaw cycles

APPLICATIONS: Western Blot (WB): 1:500 to 1:2000 dilution

This information is only intended as a guide. The optimal dilutions must be determined by the user



Western blot analysis of lysates prepared from various cell lines using CD103 antibody

RELATED PRODUCTS:

Anti- α 4 β 7 Integrin (Vedolizumab), Humanized Antibody (Cat. No. A2140)
 Anti-Alpha 5 Beta 1 Integrin (Vociciximab), Human IgG4 Antibody (Cat. No. A1092)
 Anti-Integrin Beta-1 Rabbit Monoclonal Antibody (Cat. No. A1598)
 Anti-Integrin β 1 Antibody (Cat. No. A1669)
 Anti-CD61 / Integrin beta-3 / Platelet Glycoprotein IIIa Antibody (CloneY2/51) (Cat. No. A1556)
 Anti-Integrin Alpha 4 (Natalizumab), Human IgG4 Antibody (Cat. No. A1444)

FOR RESEARCH USE ONLY! Not to be used on humans.