

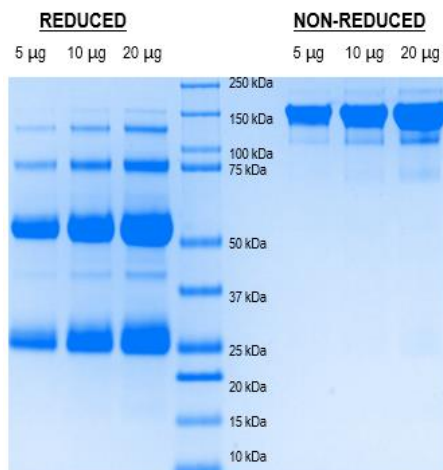
IgG1 From Human COVID-19 Convalescent Plasma

CATALOG NO.: **A2302-50 (50 µg)**

BACKGROUND DESCRIPTION: SARS-CoV-2 was initially identified in Wuhan City, Hubei Province, China, and has since resulted in a global pandemic. Medical, clinical, and scientific forces have collaborated to create innovative treatments that target the specific viral proteins and inhibit viral replication, as well as develop several viable vaccines against SARS-CoV-2. Among the treatments is injecting high-risk COVID-19 patients with convalescent plasma donated from other patients who have recovered from their own infection. This research-grade product comprises the isolated, purified, and enriched immunoglobulin isotype IgG1 pool from donated human COVID-19 convalescent plasma. The IgG pool comprises antibodies formed in response to the entire range of possible SARS-CoV-2 epitopes. Applications include serving as positive controls for testing kits; epitope mapping; and potential testing for new vaccines.

ALTERNATE NAMES:	Severe acute respiratory syndrome coronavirus 2; COVID-19
ANTIBODY TYPE:	Polyclonal
HOST/ISOTYPE:	Human / IgG1
FORM:	Lyophilized protein
FORMULATION:	Lyophilized from 20 mM phosphate buffer, pH 7.4, with 150 mM NaCl
RECONSTITUTION:	Reconstitute using deionized water to original pre-lyophilized concentration with gentle mixing. If further dilutions are desired, dilute using 20 mM phosphate buffer, pH 7.4, with 150 mM NaCl
SPECIES REACTIVITY:	SARS-CoV-2
STORAGE CONDITIONS:	Store at -20 °C. After reconstitution, aliquot and store at ≤ -20 °C
INFECTIOUS DISEASE TESTING:	Prepared from plasma shown to be non-reactive for HBsAg, anti-HCV, anti-HBc, and negative for anti-HIV 1 & 2 by FDA approved tests

This information is only intended as a guide. The optimal dilutions must be determined by the user



SDS-PAGE analysis to assess purity and integrity of IgG from human COVID-19 convalescent plasma

RELATED PRODUCTS:

Anti-ACE2 Antibody (Cat. No. A2072)
 Anti-SARS-CoV-2 Spike S1 Antibody (Cat. No. A3000)
 Anti-TMPRSS2 Antibody (Cat. No. A2102)
 Anti-CD147 (Meplazumab), Humanized Antibody (Cat. No. A2290)
 Anti-SARS-CoV-2 RBD (Bamlanivimab), Humanized Antibody (Cat. No. A2292)

FOR RESEARCH USE ONLY! Not to be used on humans