

CD163 Rabbit Monoclonal Antibody (Clone# 7B2), For IHC

02/21

CATALOG NO.: A2304-50 (50 µg)
 A2304-100 (100 µg)

BACKGROUND DESCRIPTION: CD163 is a member of the scavenger receptor cysteine-rich (SRCR) superfamily that is exclusively expressed in monocytes and macrophages. It mediates the clearance of hemoglobin/haptoglobin complexes by macrophages, which may protect tissues from free hemoglobin-mediated oxidative damage. CD163 may also mediate innate immunity against bacteria, and plays a role in inflammatory responses. CD163 is upregulated in many inflammatory diseases including liver cirrhosis and rheumatoid arthritis. CD163 expression is associated with Hodgkin lymphoma, and correlates with poor survival outcomes in glioma cases. Recent studies have shown that the depletion of macrophages expressing CD163 can result in a massive recruitment of activated T cells into tumor microenvironments, suggesting a role for CD163 in tumor progression.

ALTERNATE NAMES: M130; MM130; SCAR11

ANTIBODY TYPE: Rabbit Monoclonal

CLONE: 7B2

HOST/ISOTYPE: Rabbit / IgG

IMMUNOGEN: Synthesized human CD163 peptide

PURIFICATION: Affinity purification

FORM: Liquid

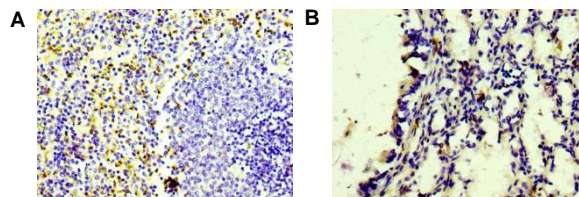
FORMULATION: In PBS pH 7.4, 0.02% sodium azide, 50% glycerol

SPECIES REACTIVITY: Human

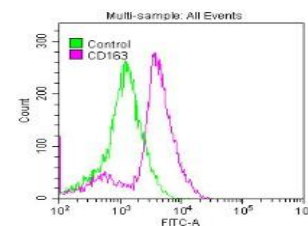
STORAGE CONDITIONS: Store at -80 °C. Avoid repeated freeze-thaw cycles

APPLICATIONS: Immunohistochemistry (IHC): 1:50 to 1:500 dilution

This information is only intended as a guide. The optimal dilutions must be determined by the user



IHC of human spleen tissue (A) and human lung tissue (B) using CD163 antibody



Overlay histogram showing Raw264.7 cells stained with control antibody (green) vs. CD163 antibody (pink)

RELATED PRODUCTS:

Anti-GDF-15 Antibody (Cat. No. A2038)
 Haptoglobin Polyclonal Antibody (Cat. No. 7017)
 Anti-CD80 (Galiximab), Human IgG1, Lambda Antibody (Cat. No. A2011)
 Anti-MST1 Antibody (Cat. No. A1895)
 CD40 Antibody (Cat. No. 3072)

FOR RESEARCH USE ONLY! Not to be used on humans.