

IFITM2 Antibody

CATALOG NO.: **A2305-50 (50 µg)**
A2305-100 (100 µg)

BACKGROUND DESCRIPTION: Interferon induced transmembrane protein 2 (IFITM2) is an antiviral protein which inhibits viral entry into host cells. IFITM2 is active against many viruses, including influenza A, Ebola, Dengue, West Nile, HIV-1, and SARS-CoV. IFITM2 can induce cell cycle arrest and also mediates apoptosis by caspase activation in a p53-independent manner.

ALTERNATE NAMES: Interferon induced transmembrane protein 2; DSPA2c; Interferon inducible protein 1-8D

ANTIBODY TYPE: Rabbit Polyclonal

HOST/ISOTYPE: Rabbit / IgG

IMMUNOGEN: KLH conjugated synthetic peptide from the N-terminus of human IFITM2

PURIFICATION: Protein A purification followed by peptide affinity purification

MOLECULAR WEIGHT: 14.6 kDa

FORM: Liquid

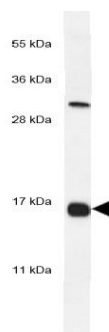
FORMULATION: In PBS with 0.09% (W/V) sodium azide

SPECIES REACTIVITY: Human

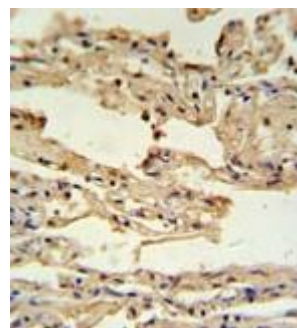
STORAGE CONDITIONS: Store at -20 °C. Avoid repeated freeze-thaw cycles

APPLICATIONS: Western Blot (WB): 1:1000 dilution; Immunohistochemistry (IHC): 1:50 to 1:100 dilution

This information is only intended as a guide. The optimal dilutions must be determined by the user



Western blot analysis of NCI-H460 cell lysate sample using IFITM2 antibody



IHC analysis of human lung carcinoma tissue sample using IFITM2 antibody

RELATED PRODUCTS:

Anti-IFN-γ (Emapalumab), Human IgG1 Antibody (Cat. No. A2270)
 Anti-IFITM1 Antibody (Cat. No. A1932)
 Anti-IFNAR1 Antibody (Cat. No. A2288)
 TLR3 Polyclonal Antibody (Cat. No. 3445)
 TLR5 (Toll-like receptor 5) Polyclonal Antibody (Cat. No. 3555)

FOR RESEARCH USE ONLY! Not to be used on humans.