

IFITM3 Antibody

CATALOG NO.: **A2306-50 (50 µg)**
A2306-100 (100 µg)

BACKGROUND DESCRIPTION: Interferon induced transmembrane protein 3 (IFITM3) is an antiviral protein which inhibits viral entry into host cells. IFITM3 disrupts intracellular cholesterol homeostasis, which may lead to inactivated newly enveloped viruses which bud from infected cells with a cholesterol depleted membrane. IFITM3 is active against many viruses, including influenza A, Ebola, Dengue, West Nile, HIV-1, and SARS-CoV. While known to restrict infection by SARS-CoV-2, certain mutations of residues within IFITM3 may convert the protein into an enhancer of infection, making this protein an intriguing marker for COVID-19 research.

ALTERNATE NAMES: Interferon induced transmembrane protein 3; DSPA2b; Interferon inducible protein 1-8U; IP15

ANTIBODY TYPE: Rabbit Polyclonal

HOST/ISOTYPE: Rabbit / IgG

IMMUNOGEN: KLH conjugated synthetic peptide from the N-terminus of human IFITM3

PURIFICATION: Protein A purification followed by peptide affinity purification

MOLECULAR WEIGHT: 14.6 kDa

FORM: Liquid

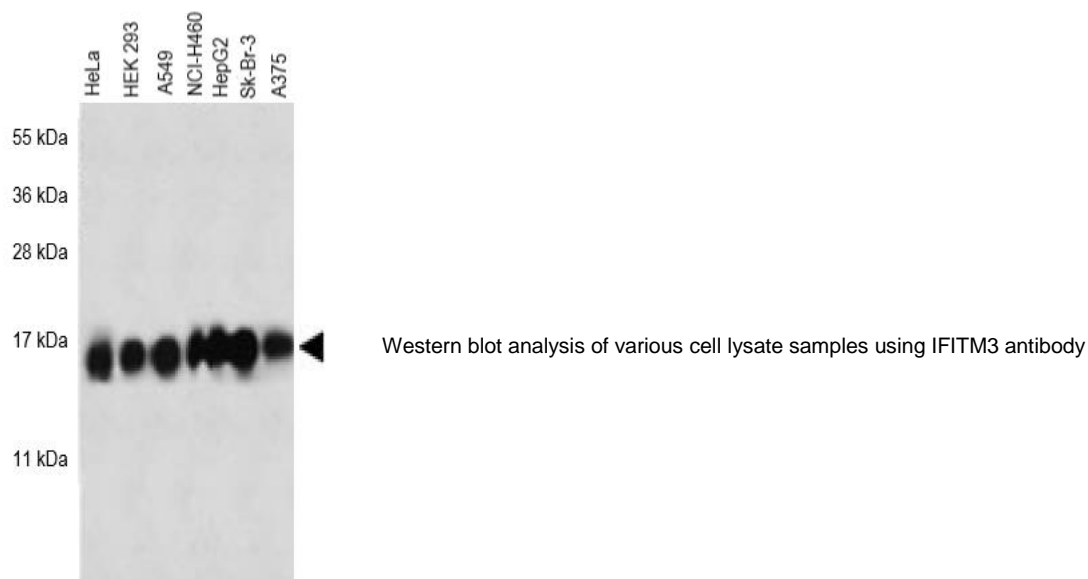
FORMULATION: In PBS with 0.09% (W/V) sodium azide

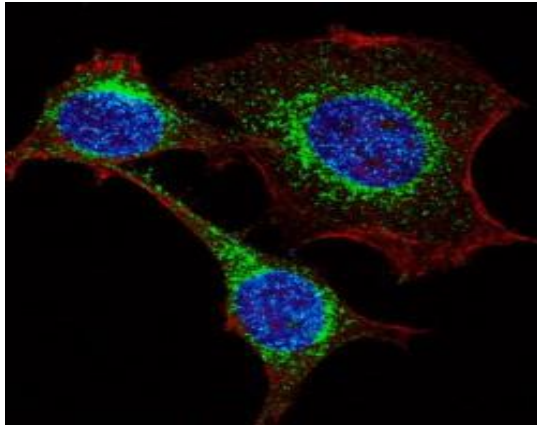
SPECIES REACTIVITY: Human, Mouse

STORAGE CONDITIONS: Store at -20 °C. Avoid repeated freeze-thaw cycles

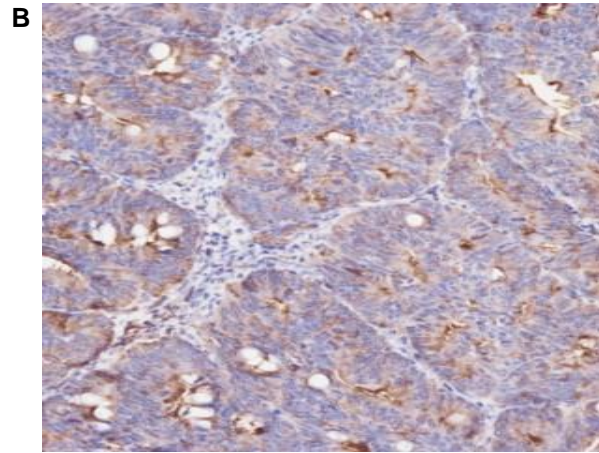
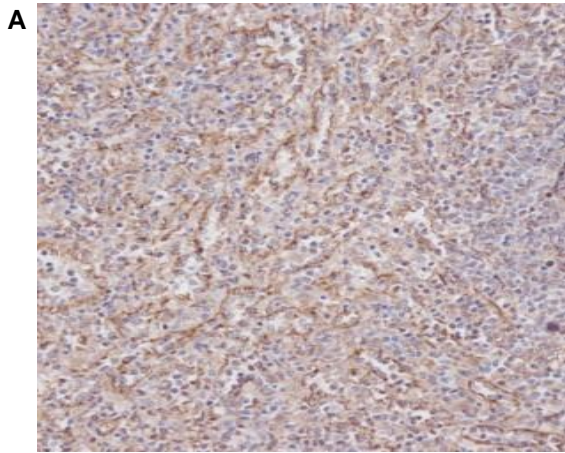
APPLICATIONS: Western Blot (WB): 1:1000 dilution; Immunohistochemistry (IHC): 1:100 dilution
 Immunofluorescence (IF): 1:100 to 1:500 dilution

This information is only intended as a guide. The optimal dilutions must be determined by the user





Immunofluorescence with IFITM3 antibody. Confocal image shows IFITM3 (green), actin (red), and nuclei (DAPI, blue)



IHC analysis of human (A) spleen and (B) colon carcinoma tissue samples using IFITM3 antibody

RELATED PRODUCTS:

Anti-IFITM1 Antibody (Cat. No. A1932)
TLR3 Polyclonal Antibody (Cat. No. 3445)
Anti-IFN- γ (Emapalumab), Human IgG1 Antibody (Cat. No. A2270)
TLR5 (Toll-like receptor 5) Polyclonal Antibody (Cat. No. 3555)
Anti-IFNAR1 Antibody (Cat. No. A2288)

FOR RESEARCH USE ONLY! Not to be used on humans.