

Citrullinated Fibrinogen mAb (10E9.3)

| | |
|---------------------|---------------------------|
| CATALOG NO.: | A2316-50 (50 µg) |
| | A2316-100 (100 µg) |

BACKGROUND DESCRIPTION: Fibrinogen is a glycoprotein complex composed of three different polypeptides (α , β , γ) that is cleaved by thrombin to form an insoluble fibrin matrix that acts as a plasma clotting factor. Cleavage products of fibrinogen and fibrin regulate cell adhesion and activate chemotaxis. Chronic inflammation can induce protein arginine deiminases (such as PAD2 and PAD4) to citrullinate fibrinogen, which has been associated with auto-antibodies in rheumatoid arthritis.

ALTERNATE NAMES: FGA; Fibrinogen Beta Chain; Beta-Fibrinogen; FGB; FGG

ANTIBODY TYPE: Monoclonal

CLONE: 10E9.3

HOST/ISOTYPE: Mouse / IgG2b

IMMUNOGEN: Human citrullinated fibrinogen

PURIFICATION: Protein G purification

MOLECULAR WEIGHT: 56 kDa

FORM: Liquid

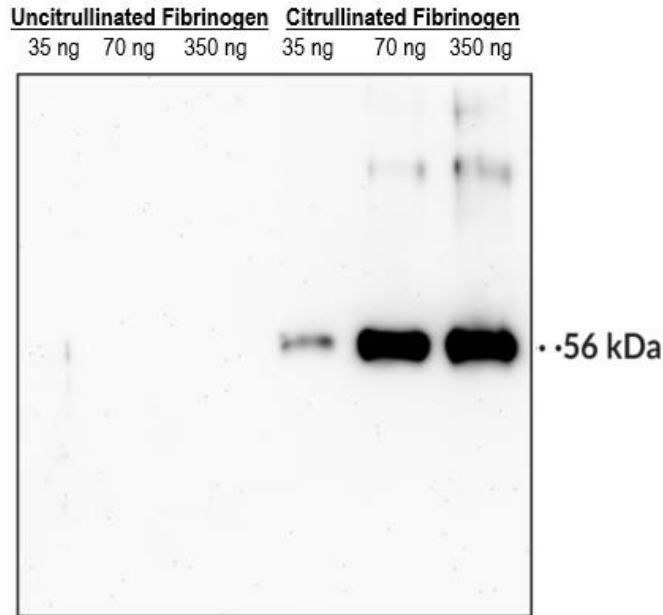
FORMULATION: In PBS, pH 7.2, with 50% glycerol and 0.02% sodium azide

SPECIES REACTIVITY: Human

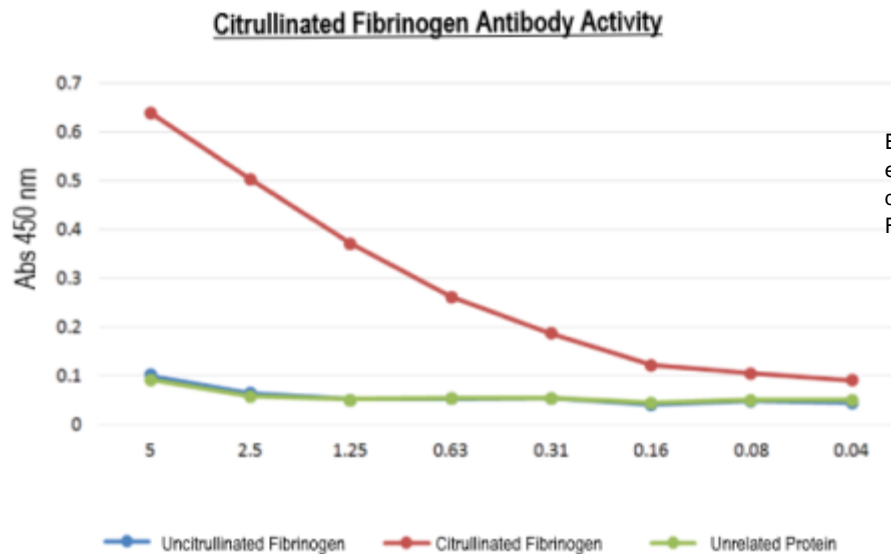
STORAGE CONDITIONS: Aliquot and store at -20 °C. Avoid repeated freeze-thaw cycles

APPLICATIONS: Western Blot: 1:1000 dilution; ELISA: 1:200 dilution

This information is only intended as a guide. The optimal dilutions must be determined by the user



Western blot analysis of various loads of uncitrullinated and citrullinated fibrinogen. Citrullinated Fibrinogen monoclonal antibody only recognizes the citrullinated protein.



RELATED PRODUCTS:

Human Fibrinogen (PAD4 Citrullinated) (Cat. No. P1719)
 Human Fibrinogen (PAD2 Citrullinated) (Cat. No. P1718)
 PAD4 Monoclonal Antibody (Clone 11F9) (Cat. No. A2314M)
 Anti-Fibrinogen Antibody (Cat. No. A1708)
 PAD2 Monoclonal Antibody (Clone 9F7) (Cat. No. A2312M)

FOR RESEARCH USE ONLY! Not to be used on humans.