

Anti-Melatonin Receptor 1A Polyclonal Antibody

CATALOG NO.: **A2326-50 (50 µl)**
A2326-100 (100 µl)

BACKGROUND DESCRIPTION: The Melatonin Receptor 1A (MTNR1A) is one of two high affinity forms of a receptor for melatonin, the primary hormone secreted by the pineal gland. MTNR1A is localized to the retina, the hypothalamic suprachiasmatic nucleus, which is involved in melatonin-mediated effects on circadian rhythm, and the hypophysial pars tuberalis, which may be responsible for the reproductive effects of melatonin.

ALTERNATE NAMES: Melatonin Receptor Type 1A; Mel1a Receptor; MEL-1A-R; Mel-1A-R; MT1; MTNR1A

ANTIBODY TYPE: Polyclonal

HOST/ISOTYPE: Rabbit / IgG

IMMUNOGEN: Synthetic peptide derived from human MTNR1A

PURIFICATION: Affinity Purification

MOLECULAR WEIGHT: 39 kDa (calculated)

FORM: Liquid

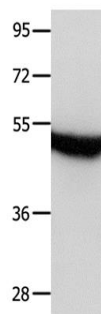
FORMULATION: In PBS with 0.05% sodium azide, 50% glycerol, pH 7.4

SPECIES REACTIVITY: Human, Mouse, Rat

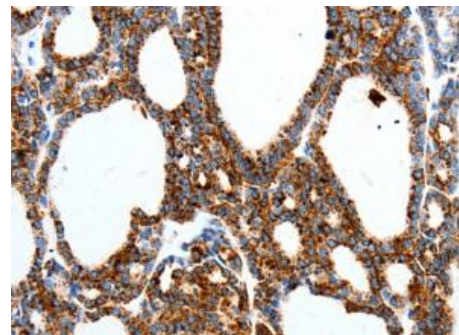
STORAGE CONDITIONS: Aliquot and store at -20 °C. Avoid repeated freeze-thaw cycles

APPLICATIONS: Western Blotting (WB): 1:1000 to 1:5000 dilution; IHC: 1:25 to 1:100 dilution

This information is only intended as a guide. The optimal dilutions must be determined by the user



Western blot analysis of mouse brain tissue lysate sample using Anti-Melatonin Receptor 1A Polyclonal Antibody.



IHC analysis of human thyroid cancer tissue samples using Anti-Melatonin Receptor 1A Polyclonal Antibody.

RELATED PRODUCTS:

Anti-NAMPT Antibody (14A5) (Cat. No. A1301)
 Anti-CREB1 Antibody (Cat. No. A1754)
 Phospho CREB (Ser129) Antibody (Cat. No. A1222)
 Anti-KDM5C / Jarid1C / SMCX Antibody (2E4-E1-G8) (Cat. No. A1308)
 Phospho-CREB-1 (Ser133) Antibody (Cat. No. A1269)

FOR RESEARCH USE ONLY! Not to be used on humans.