

Anti-TIMELESS Polyclonal Antibody

CATALOG NO.: **A2327-50 (50 µl)**
A2327-100 (100 µl)

BACKGROUND DESCRIPTION: The TIMELESS protein plays an important role in the maintenance of genome stability during DNA replication. TIMELESS also interacts with other proteins in the circadian autoregulatory loop, including PER1, to regulate the circadian clock. Disruptions to TIMELESS has been associated with prostate cancer, lung cancer, breast cancer, and mental disorders.

ALTERNATE NAMES: Timeless Circadian Regulator; TIM1; HTIM; TIM; Timeless Circadian Clock 1; TIMELESS1

ANTIBODY TYPE: Polyclonal

HOST/ISOTYPE: Rabbit / IgG

IMMUNOGEN: Recombinant human TIMELESS fusion protein

PURIFICATION: Affinity Purification

MOLECULAR WEIGHT: 138 kDa (calculated); 160 kDa (observed)

FORM: Liquid

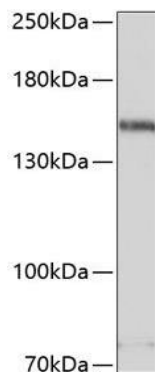
FORMULATION: In PBS with 0.02% sodium azide, 50% glycerol, pH 7.3

SPECIES REACTIVITY: Human, Mouse

STORAGE CONDITIONS: Aliquot and store at -20 °C. Avoid repeated freeze-thaw cycles

APPLICATIONS: Western Blotting: 1:500 to 1:2000 dilution

This information is only intended as a guide. The optimal dilutions must be determined by the user



Western blot analysis of BxPC-3 cell lysate sample using Anti-TIMELESS Polyclonal Antibody.

RELATED PRODUCTS:

Anti-CREB1 Antibody (Cat. No. A1754)
 Phospho CREB (Ser129) Antibody (Cat. No. A1222)
 Anti-KDM5C / Jarid1C / SMCX Antibody (2E4-E1-G8) (Cat. No. A1308)
 Anti-NAMPT Antibody (14A5) (Cat. No. A1301)
 Phospho-CREB-1 (Ser133) Antibody (Cat. No. A1269)

FOR RESEARCH USE ONLY! Not to be used on humans