

Anti-PER1 Polyclonal Antibody

CATALOG NO.: A2328-50 (50 µl)
A2328-100 (100 µl)

BACKGROUND DESCRIPTION: The PERIOD 1 (PER1) protein is a transcriptional repressor which forms a core component of the circadian clock. Expressed in the suprachiasmatic nucleus, PER1 is responsible for circadian rhythms in locomotor activity, metabolism, and behavior. The circadian autoregulatory loop involves PERIOD heterodimers with cryptochrome proteins interacting with CLOCK/ARNTL. Disruptions in PER1 may increase the risk of developing cancer.

ALTERNATE NAMES: Period Circadian Regulator 1; RIGUI; HPER1; PER; Circadian Pacemaker Protein RIGUI; HPER

ANTIBODY TYPE: Polyclonal

HOST/ISOTYPE: Rabbit / IgG

IMMUNOGEN: Recombinant human PER1 fusion protein

PURIFICATION: Immunogen affinity chromatography

MOLECULAR WEIGHT: 136 kDa (calculated)

FORM: Liquid

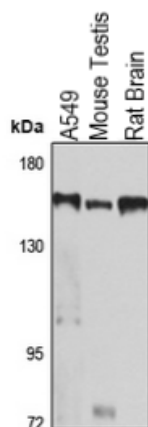
FORMULATION: In 0.42% potassium phosphate, 0.87% NaCl, pH 7.3, w/30% glycerol and 0.01% sodium azide

SPECIES REACTIVITY: Human, Mouse, Rat

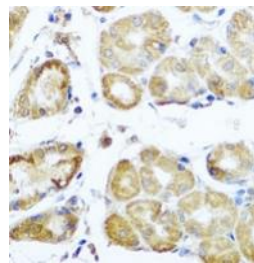
STORAGE CONDITIONS: Aliquot and store at -20 °C. Avoid repeated freeze-thaw cycles

APPLICATIONS: Western blot: 1:500 to 1:2000 dilution; IHC and IF: 1:50 to 1:200 dilution

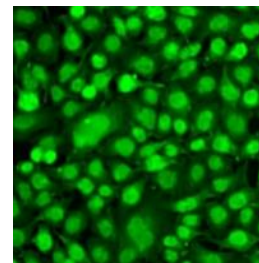
This information is only intended as a guide. The optimal dilutions must be determined by the user



Western blot analysis of PER1 expression in various lysate samples using Anti-PER1 Polyclonal Antibody.



IHC analysis of human stomach tissue using Anti-PER1 Polyclonal Antibody.



Immunofluorescence analysis of U2OS cells using Anti-PER1 Polyclonal Antibody.

RELATED PRODUCTS:

Phospho-CREB-1 (Ser133) Antibody (Cat. No. A1269)
 Anti-CREB1 Antibody (Cat. No. A1754)
 Phospho CREB (Ser129) Antibody (Cat. No. A1222)
 Anti-NAMPT Antibody (14A5) (Cat. No. A1301)
 Anti-KDM5C / Jarid1C / SMCX Antibody (2E4-E1-G8) (Cat. No. A1308)