

Anti-CLOCK Polyclonal Antibody

CATALOG NO.: **A2329-50 (50 µl)**
A2329-100 (100 µl)

BACKGROUND DESCRIPTION: The CLOCK protein is a transcription factor that forms a heterodimer with ARNTL to control the expression of the PERIOD and Cryptochrome genes. PERIOD and Cryptochrome in turn can repress their own expression in a feedback loop with CLOCK/ARNTL. The coordinated interplay between these proteins contributes to the defined oscillations of the circadian clock.

ALTERNATE NAMES: Clock Circadian Regulator; Circadian Locomotor Output Cycles Protein Kaput; KAT13D; HCLOCK

ANTIBODY TYPE: Polyclonal

HOST/ISOTYPE: Rabbit / IgG

IMMUNOGEN: KLH-conjugated synthetic peptide derived from human CLOCK

PURIFICATION: Immunogen affinity chromatography

MOLECULAR WEIGHT: 95 kDa (calculated)

FORM: Liquid

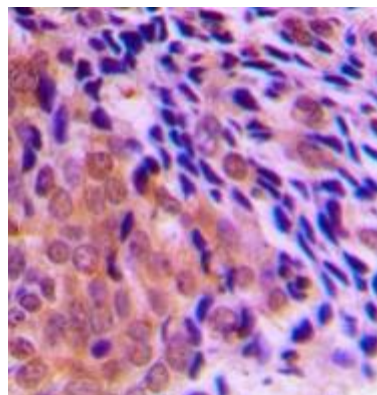
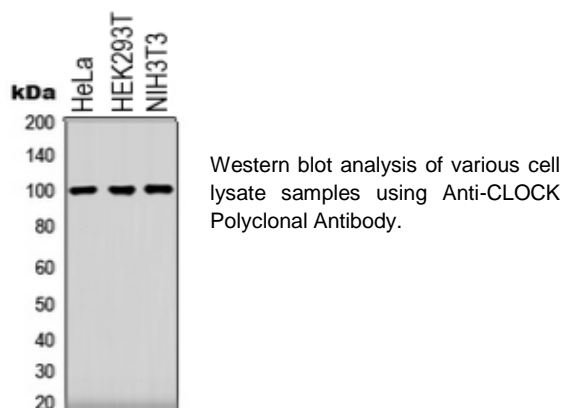
FORMULATION: In 0.42% potassium phosphate, 0.87% NaCl, pH 7.3, w/30% glycerol and 0.01% sodium azide

SPECIES REACTIVITY: Human, Mouse

STORAGE CONDITIONS: Aliquot and store at -20 °C. Avoid repeated freeze-thaw cycles

APPLICATIONS: Western Blot: 1:500 to 1:1000 dilution; IHC: 1:100 to 1:200 dilution

This information is only intended as a guide. The optimal dilutions must be determined by the user



IHC analysis of human prostate cancer tissue sample using Anti-CLOCK Polyclonal Antibody.

RELATED PRODUCTS:

Anti-CREB1 Antibody (Cat. No. A1754)
 Phospho CREB (Ser129) Antibody (Cat. No. A1222)
 Phospho-CREB-1 (Ser133) Antibody (Cat. No. A1269)
 Anti-KDM5C / Jarid1C / SMCX Antibody (2E4-E1-G8) (Cat. No. A1308)
 Anti-NAMPT Antibody (14A5) (Cat. No. A1301)

FOR RESEARCH USE ONLY! Not to be used on humans.