

Anti-ARNTL Polyclonal Antibody

CATALOG NO.: **A2330-50 (50 µg)**
 A2330-100 (100 µg)

BACKGROUND DESCRIPTION: ARNTL (also known as BMAL1) is a basic helix-loop-helix protein that forms a heterodimer with CLOCK. The CLOCK/ARNTL heterodimer controls transcription of the PERIOD and Cryptochrome genes. PERIOD and Cryptochrome in turn can repress their own expression in a feedback loop with CLOCK/ARNTL. The coordinated interplay between these proteins contributes to the defined oscillations of the circadian clock.

ALTERNATE NAMES: Aryl Hydrocarbon Receptor Nuclear Translocator Like; BHLHe5; BMAL1; PASD3; MOP3; TIC

ANTIBODY TYPE: Polyclonal

HOST/ISOTYPE: Rabbit / IgG

IMMUNOGEN: Recombinant human ARNTL protein (Glu 48 to Leu 320)

PURIFICATION: Antigen affinity purification

MOLECULAR WEIGHT: 69 kDa (calculated); 60-75 kDa (observed)

FORM: Liquid

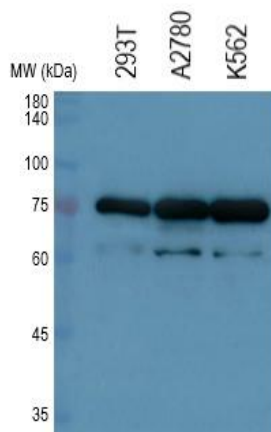
FORMULATION: PBS, pH 7.4 with 0.05% Proclin 300, 50% glycerol

SPECIES REACTIVITY: Human, Mouse

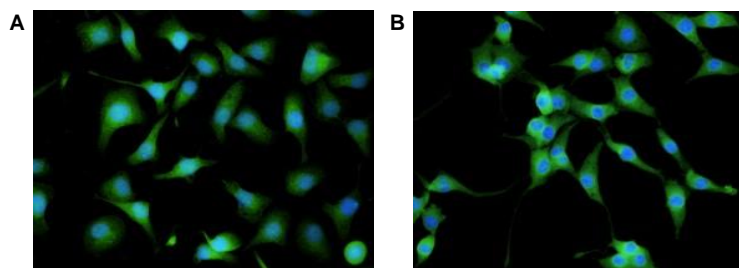
STORAGE CONDITIONS: Aliquot and store at -20 °C. Avoid repeated freeze-thaw cycles

APPLICATIONS: Western Blotting: 1:2000 to 1:8000 dilution; IF: 1:50 to 1:200 dilution

This information is only intended as a guide. The optimal dilutions must be determined by the user



Western blot analysis of various cell lysate samples using Anti-ARNTL Polyclonal Antibody.



Immunofluorescence analysis of **A)** SKOV3 cells and **B)** NIH3T3 cells using Anti-ARNTL Polyclonal Antibody.

RELATED PRODUCTS:

Anti-NAMPT Antibody (14A5) (Cat. No. A1301)
 Anti-CREB1 Antibody (Cat. No. A1754)
 Phospho CREB (Ser129) Antibody (Cat. No. A1222)
 Phospho-CREB-1 (Ser133) Antibody (Cat. No. A1269)
 Anti-KDM5C / Jarid1C / SMCX Antibody (2E4-E1-G8) (Cat. No. A1308)

FOR RESEARCH USE ONLY! Not to be used on humans