

# Anti-RORA Polyclonal Antibody

CATALOG NO.: **A2331-50 (50 µl)**  
**A2331-100 (100 µl)**

**BACKGROUND DESCRIPTION:** ROR alpha (RORA) is a member of the NR1 subfamily of nuclear hormone receptors. RORA has been shown to interact with NM23-2, which is involved in organogenesis and differentiation, and NM23-1, a candidate tumor metastasis suppressor. RORA is involved in the transcriptional regulation of cholesterol and glucose metabolism, as well as some genes associated with the circadian rhythm.

**ALTERNATE NAMES:** RAR Related Orphan Receptor A; NR1F1; RZRA; ROR1; ROR2; ROR3; ROR-Alpha

**ANTIBODY TYPE:** Polyclonal

**HOST/ISOTYPE:** Rabbit / IgG

**IMMUNOGEN:** Recombinant human RORA fusion protein

**PURIFICATION:** Affinity Purification

**MOLECULAR WEIGHT:** 63 kDa

**FORM:** Liquid

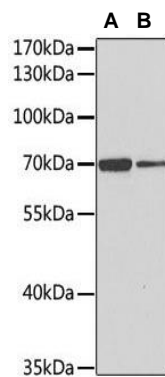
**FORMULATION:** In PBS with 0.02% sodium azide, 50% glycerol, pH 7.3

**SPECIES REACTIVITY:** Human, Mouse

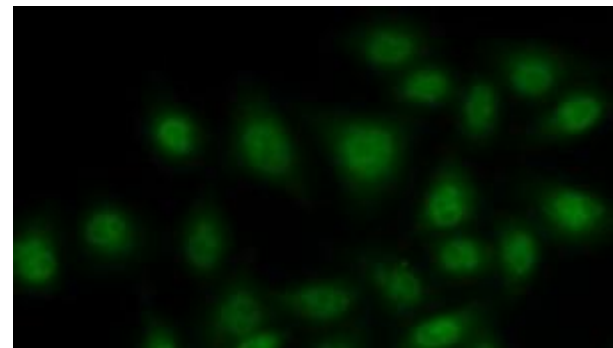
**STORAGE CONDITIONS:** Aliquot and store at -20 °C. Avoid repeated freeze-thaw cycles

**APPLICATIONS:** Western Blotting: 1:500 to 1:2000 dilution; Immunofluorescence: 1:50 to 1:200 dilution

This information is only intended as a guide. The optimal dilutions must be determined by the user



Western blot analysis of **A)** mouse brain and **B)** mouse kidney tissue samples using Anti-RORA Polyclonal Antibody.



Immunofluorescence analysis of MCF-7 cells using Anti-RORA Polyclonal Antibody.

## RELATED PRODUCTS:

Anti-NAMPT Antibody (14A5) (Cat. No. A1301)  
 Anti-CREB1 Antibody (Cat. No. A1754)  
 Phospho-CREB-1 (Ser133) Antibody (Cat. No. A1269)  
 Anti-KDM5C / Jarid1C / SMCX Antibody (2E4-E1-G8) (Cat. No. A1308)  
 Phospho CREB (Ser129) Antibody (Cat. No. A1222)

**FOR RESEARCH USE ONLY! Not to be used on humans.**