

# Anti-CCAR2 Polyclonal Antibody

CATALOG NO.: **A2332-50 (50 µl)**  
**A2332-100 (100 µl)**

**BACKGROUND DESCRIPTION:** The CCAR2 protein is a core component of the DBIRD complex, which integrates transcript elongation with the regulation of alternative splicing. CCAR2 can inhibit SIRT1 deacetylase activity, and is involved in tumor suppression through the regulation of P53. CCAR2 also regulates the circadian expression of core clock components NR1D1 and ARNTL.

**ALTERNATE NAMES:** Cell Cycle And Apoptosis Regulator 2; KIAA1967; DBC-1; NET35; DBC1

**ANTIBODY TYPE:** Polyclonal

**HOST/ISOTYPE:** Rabbit / IgG

**IMMUNOGEN:** Recombinant human CCAR2 fusion protein

**PURIFICATION:** Affinity Purification

**FORM:** Liquid

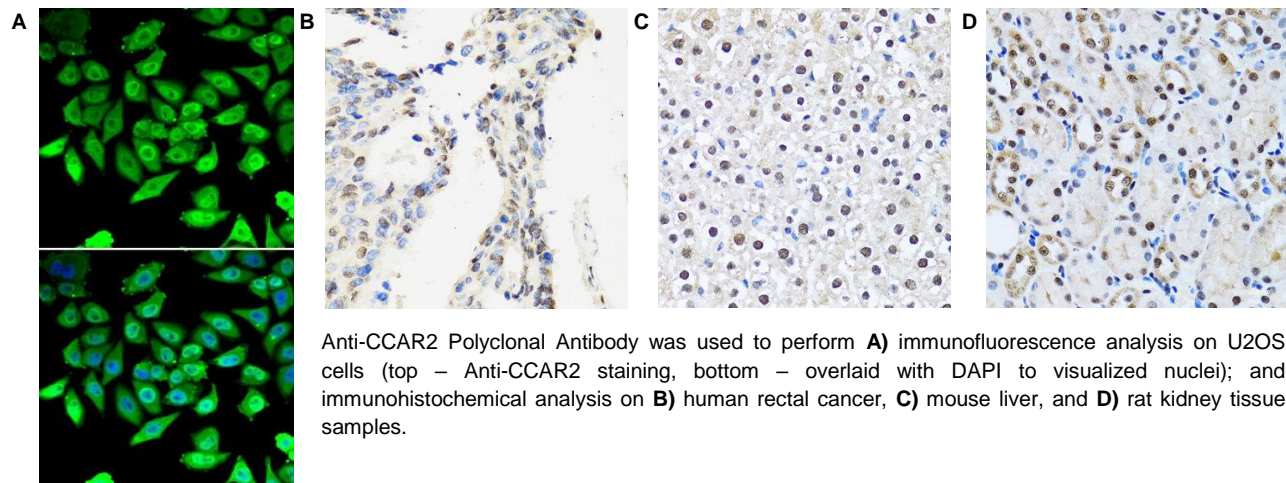
**FORMULATION:** In PBS with 0.02% sodium azide, 50% glycerol, pH 7.3

**SPECIES REACTIVITY:** Human, Mouse, Rat

**STORAGE CONDITIONS:** Aliquot and store at -20 °C. Avoid repeated freeze-thaw cycles

**APPLICATIONS:** IHC and IF: 1:50 to 1:200 dilution

**This information is only intended as a guide. The optimal dilutions must be determined by the user**



## RELATED PRODUCTS:

Phospho CREB (Ser129) Antibody (Cat. No. A1222)  
 Anti-KDM5C / Jarid1C / SMCX Antibody (2E4-E1-G8) (Cat. No. A1308)  
 Anti-NAMPT Antibody (14A5) (Cat. No. A1301)  
 Anti-CREB1 Antibody (Cat. No. A1754)  
 Phospho-CREB-1 (Ser133) Antibody (Cat. No. A1269)

**FOR RESEARCH USE ONLY! Not to be used on humans**

Gentaur Europe BVBA Voortstraat 49, 1910 Kampenhout BELGIUM  
 Tel 0032 16 58 90 45 [info@gentaur.com](mailto:info@gentaur.com)

