

# Anti-BHLHE40 Polyclonal Antibody

CATALOG NO.: **A2333-50 (50 µl)**  
**A2333-100 (100 µl)**

**BACKGROUND DESCRIPTION:** The BHLHE40 protein (also known as SHARP-2) is a transcriptional repressor involved in regulating the circadian rhythm through its regulation of the CLOCK/ARNTL transcription activator and the expression of clock-controlled genes. BHLHE40 is in a different autoregulatory feedback loop than PERIOD and Cryptochrome, but is still able to repress the expression of PER1 and in turn is also repressed by PERIOD and Cryptochrome heterodimers.

**ALTERNATE NAMES:** Basic Helix-Loop-Helix Family Member E40; SHARP-2; SHARP2; DEC1

**ANTIBODY TYPE:** Polyclonal

**HOST/ISOTYPE:** Rabbit / IgG

**IMMUNOGEN:** Full length recombinant human BHLHE40 protein

**PURIFICATION:** Immunogen affinity chromatography

**MOLECULAR WEIGHT:** 45.5 kDa

**FORM:** Liquid

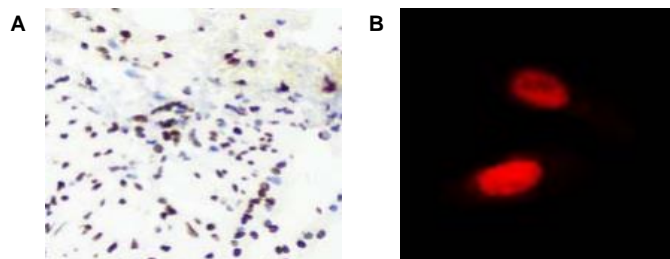
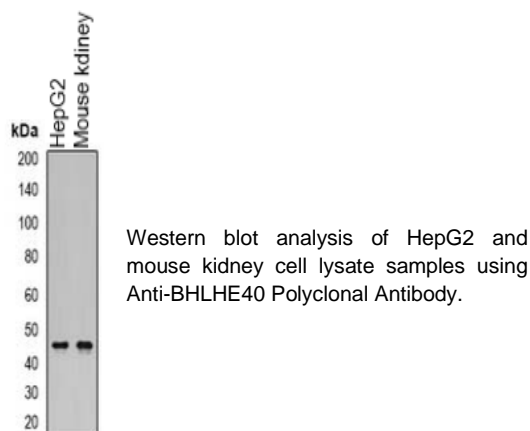
**FORMULATION:** In 0.42% potassium phosphate, 0.87% NaCl, pH 7.3, w/30% glycerol and 0.01% sodium azide

**SPECIES REACTIVITY:** Human, Mouse

**STORAGE CONDITIONS:** Aliquot and store at -20 °C. Avoid repeated freeze-thaw cycles

**APPLICATIONS:** Western Blotting: 1:500 to 1:2000 dilution; IHC & IF: 1:50 to 1:200 dilution

This information is only intended as a guide. The optimal dilutions must be determined by the user



Anti-BHLHE40 Polyclonal Antibody was used to perform **A)** IHC analysis of mouse lung tissue sample; and **B)** immunofluorescence analysis of HeLa cells.

## RELATED PRODUCTS:

Anti-NAMPT Antibody (14A5) (Cat. No. A1301)  
 Anti-KDM5C / Jarid1C / SMCX Antibody (2E4-E1-G8) (Cat. No. A1308)  
 Phospho CREB (Ser129) Antibody (Cat. No. A1222)  
 Anti-CREB1 Antibody (Cat. No. A1754)  
 Phospho-CREB-1 (Ser133) Antibody (Cat. No. A1269)

**FOR RESEARCH USE ONLY! Not to be used on humans.**