

Anti-CSNK1E Polyclonal Antibody

CATALOG NO.: A2334-50 (50 µl)
 A2334-100 (100 µl)

BACKGROUND DESCRIPTION: The casein kinase 1, epsilon (CSNK1E) is a serine/threonine protein kinase that is involved in the control of cellular processes including DNA replication and repair. CSNK1E is a central component of the circadian clock through its ability to control the phosphorylation of PERIOD proteins as well as their nuclear transport and degradation. Through modulation of PER1 and PER2 phosphorylation, CSNK1E can regulate the circadian period length.

ALTERNATE NAMES: Casein Kinase 1 Epsilon; HCKIE; CKIε; CKI-Epsilon

ANTIBODY TYPE: Polyclonal

HOST/ISOTYPE: Rabbit / IgG

IMMUNOGEN: KLH-conjugated synthetic peptide derived from human CSNK1E

PURIFICATION: Immunogen affinity chromatography

MOLECULAR WEIGHT: 47 kDa

FORM: Liquid

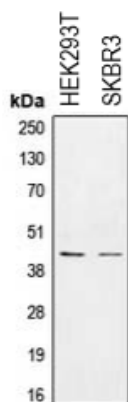
FORMULATION: In 0.42% potassium phosphate, 0.87% NaCl, pH 7.3, w/30% glycerol and 0.01% sodium azide

SPECIES REACTIVITY: Human, Mouse, Rat

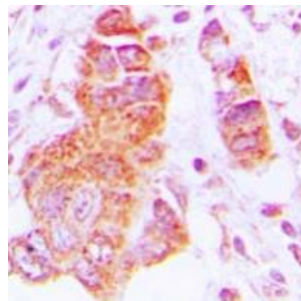
STORAGE CONDITIONS: Aliquot and store at -20 °C. Avoid repeated freeze-thaw cycles

APPLICATIONS: Western Blot: 1:500 to 1:1000 dilution; IHC: 1:100 to 1:200 dilution; IF: 1:100 to 1:500 dilution

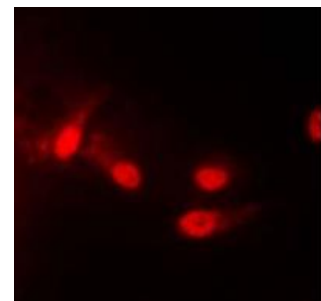
This information is only intended as a guide. The optimal dilutions must be determined by the user



Western blot analysis of HEK293T and SKBR3 whole cell lysate samples using Anti-CSNK1E Polyclonal Antibody.



IHC analysis of human lung cancer tissue samples using Anti-CSNK1E Polyclonal Antibody.



Immunofluorescence analysis of HEK293T cells using Anti-CSNK1E Polyclonal Antibody.

RELATED PRODUCTS:

Phospho-CREB-1 (Ser133) Antibody (Cat. No. A1269)
 Anti-NAMPT Antibody (14A5) (Cat. No. A1301)
 Phospho CREB (Ser129) Antibody (Cat. No. A1222)
 Anti-KDM5C / Jarid1C / SMCX Antibody (2E4-E1-G8) (Cat. No. A1308)
 Anti-CREB1 Antibody (Cat. No. A1754)

FOR RESEARCH USE ONLY! Not to be used on humans