

Anti-CXCR4 Polyclonal Antibody

CATALOG NO.: **A2335-50 (50 µl)**
A2335-100 (100 µl)

BACKGROUND DESCRIPTION: CXCR4 is a receptor for the chemokine CXCL12 (SDF-1) that mediates signal transduction through the increase of intracellular calcium ion levels and enhancing MAPK1/MAPK3 activation. CXCR4 plays a role in regulating cell migration and binds bacterial lipopolysaccharide (LPS) to mediate an inflammatory response by the innate immune system. Along with CD4, CXCR4 acts as a coreceptor for the human immunodeficiency virus (HIV-1) to allow HIV entry into host cells. CXCR4 is also overexpressed in breast cancer cells.

ALTERNATE NAMES: C-X-C Motif Chemokine Receptor 4; LESTR; Fusin; SDF-1 Receptor; CD184

ANTIBODY TYPE: Polyclonal

HOST/ISOTYPE: Rabbit / IgG

IMMUNOGEN: KLH-conjugated synthetic peptide derived from human CXCR4

PURIFICATION: Affinity chromatography

MOLECULAR WEIGHT: 40 kDa (calculated); 40-70 kDa (observed due to glycosylation)

FORM: Liquid

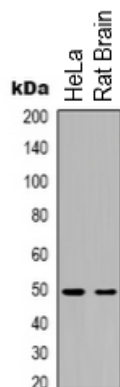
FORMULATION: In 0.42% potassium phosphate, 0.87% NaCl, pH 7.3, with 30% glycerol and 0.01% sodium azide

SPECIES REACTIVITY: Human, Rat

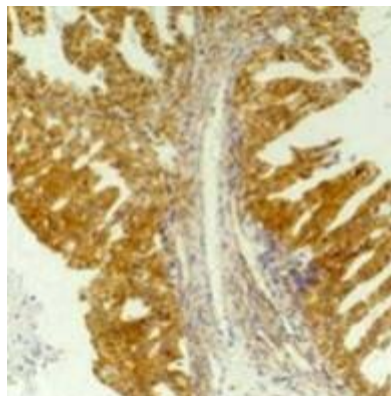
STORAGE CONDITIONS: Aliquot and store at -20 °C. Avoid repeated freeze-thaw cycles

APPLICATIONS: Western Blotting: 1:1000 to 1:2000 dilution; IHC: 1:100 to 1:200 dilution

This information is only intended as a guide. The optimal dilutions must be determined by the user



Western blot analysis of HeLa and rat brain cell lysate samples using Anti-CXCR4 Polyclonal Antibody.



Immunohistochemical analysis of human breast cancer tissue sample using Anti-CXCR4 Polyclonal Antibody.

RELATED PRODUCTS:

CXCR4 Antibody (Cat. No. 5541)
 SDF-1alpha Antibody (Cat. No. 5387)
 SDF-1beta Antibody (Cat. No. 5390)
 recMAb™ Anti-CXCR4 Antibody (Cat. No. A2243)
 SDF-1beta Antibody (Cat. No. 5393)