

# Anti-Pyruvate Dehydrogenase E2 Polyclonal Antibody

04/21

CATALOG NO.:                    **A2336-50** (50 µl)  
    **A2336-100** (100 µl)

**BACKGROUND DESCRIPTION:** The multi-component pyruvate dehydrogenase complex is a group of enzymes in the inner mitochondrial membrane that catalyzes the conversion of pyruvate into acetyl coenzyme A and links glycolysis to the Krebs cycle in cellular respiration. The E2 component, also known as dihydrolipoamide acetyltransferase, accepts the acetyl groups formed by the oxidative decarboxylation of pyruvate and transfers them to coenzyme A. The E2 component is an antigen for antimitochondrial antibodies, which are present in nearly 95% of patients with the autoimmune liver disease primary biliary cirrhosis. Disruptions in the E2 gene can cause a deficiency in E2 protein, which can in turn cause primary lactic acidosis in infancy and early childhood.

**ALTERNATE NAMES:** Dihydrolipoamide S-Acetyltransferase; PDC-E2; PDCE2; DLTA; PBC; E2; DLAT

**ANTIBODY TYPE:** Polyclonal

**HOST/ISOTYPE:** Rabbit / IgG

**IMMUNOGEN:** Recombinant fusion protein of human pyruvate dehydrogenase E2

**PURIFICATION:** Affinity purification

**MOLECULAR WEIGHT:** 69 kDa

**FORM:** Liquid

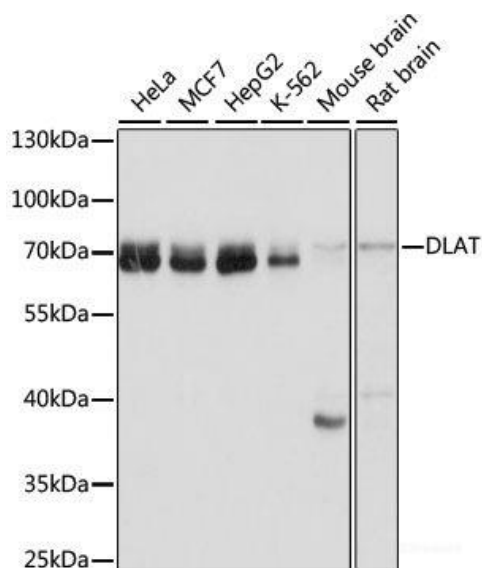
**FORMULATION:** In PBS with 0.02% sodium azide, 50% glycerol, pH 7.3

**SPECIES REACTIVITY:** Human, Mouse, Rat

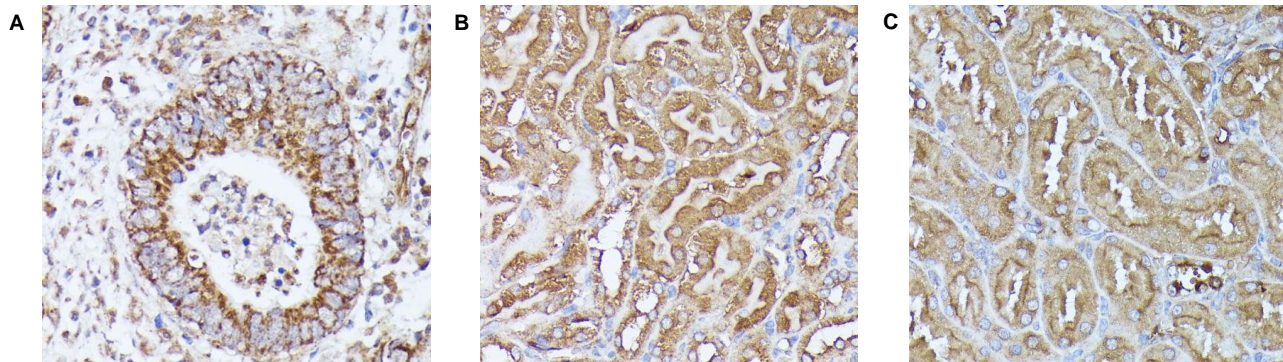
**STORAGE CONDITIONS:** Aliquot and store at -20 °C. Avoid repeated freeze-thaw cycles

**APPLICATIONS:** Western Blotting: 1:500 to 1:2000 dilution; IHC: 1:50 to 1:100 dilution; IF: 1:50 to 1:200 dilution

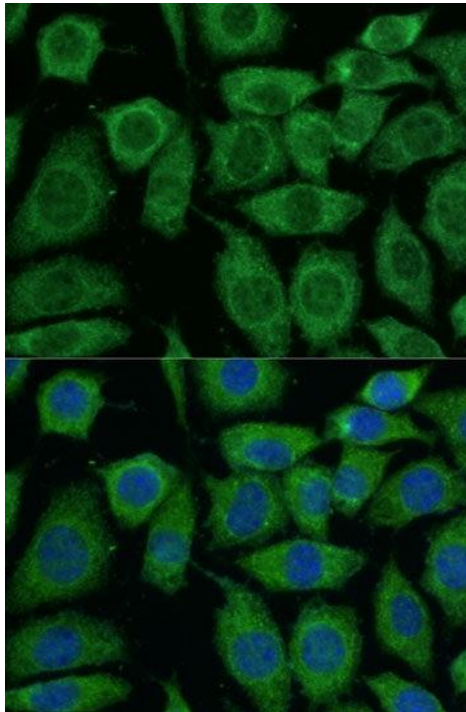
This information is only intended as a guide. The optimal dilutions must be determined by the user



Western blot analysis of various whole cell lysate samples from human cell lines, mouse and rat brain using Anti-Pyruvate Dehydrogenase E2 Polyclonal Antibody.



Immunohistochemical analysis of **A)** human colon carcinoma, **B)** mouse kidney, and **C)** rat kidney tissue samples using Anti-Pyruvate Dehydrogenase E2 Polyclonal Antibody.



Immunofluorescence analysis of L929 murine fibroblast cell line using Anti-Pyruvate Dehydrogenase E2 Polyclonal Antibody.

#### RELATED PRODUCTS:

Anti-Pyruvate Carboxylase Antibody (Cat. No. A2020)  
 Pyruvate Dehydrogenase Phosphatase 2 (PDP2) Antibody (Cat. No. 3944)  
 Anti-PPDK Antibody (Cat. No. A1711)  
 Anti-PKM Antibody (Cat. No. A1698)  
 Anti-Pyruvate Dehydrogenase E1- $\alpha$  subunit Antibody (3H2-F8-B5) (Cat. No. A1323)

**FOR RESEARCH USE ONLY! Not to be used on humans.**