

Anti-PER3 Polyclonal Antibody

CATALOG NO.: **A2340-50 (50 µl)**
A2340-100 (100 µl)

BACKGROUND DESCRIPTION: The PERIOD 3 (PER3) protein is expressed in a circadian pattern in the suprachiasmatic nucleus, the primary circadian pacemaker in the mammalian brain. The circadian autoregulatory loop involves PERIOD heterodimers with cryptochrome proteins interacting with CLOCK/ARNTL. PER3 plays a redundant role with PER1 and PER2 in maintaining circadian rhythms. While PER3 is not essential, disruptions in PER3 is associated with sleep disorders.

ALTERNATE NAMES: Period Circadian Regulator 3; Circadian Clock Protein PERIOD 3; FASPS3; GIG13; HPER3

ANTIBODY TYPE: Polyclonal

HOST/ISOTYPE: Rabbit / IgG

IMMUNOGEN: Recombinant human PER3 protein (amino acids 1 to 131)

PURIFICATION: Protein G purification

MOLECULAR WEIGHT: 132 kDa

FORM: Liquid

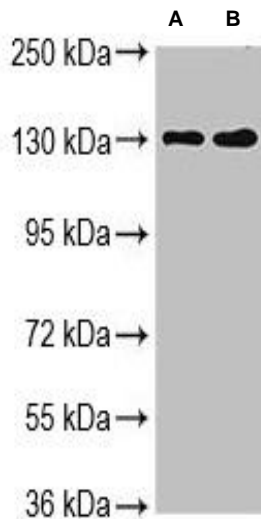
FORMULATION: In 0.01 M PBS, pH 7.4, with 50% glycerol and 0.03% Proclin 300

SPECIES REACTIVITY: Human, Mouse

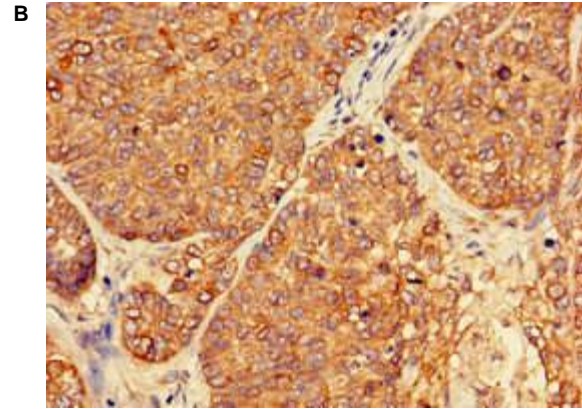
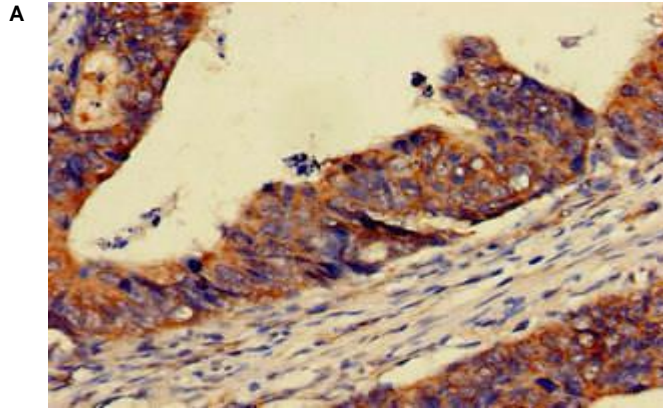
STORAGE CONDITIONS: Aliquot and store at -20 °C. Avoid repeated freeze-thaw cycles

APPLICATIONS: Western blotting: 1:500 to 1:5000 dilution; IHC/IF: 1:50 to 1:200 dilution

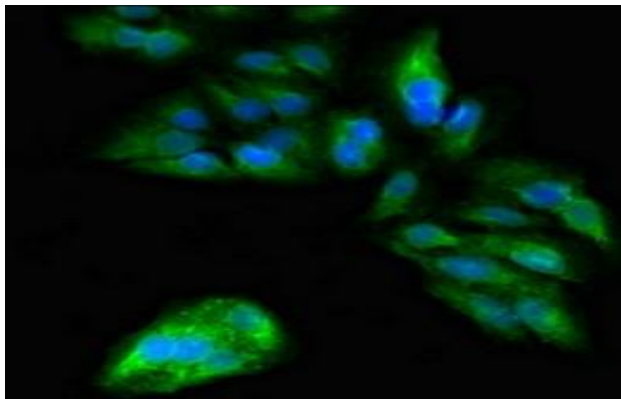
This information is only intended as a guide. The optimal dilutions must be determined by the user



Western blot analysis of **A)** HeLa cell lysate and **B)** mouse skeletal muscle tissue lysate samples using Anti-PER3 Polyclonal Antibody.



Immunohistochemistry analysis of **A**) human colon cancer and **B**) human ovarian cancer tissue samples using Anti-PER3 Polyclonal Antibody.



Immunofluorescence analysis of HeLa cells using Anti-PER3 Polyclonal Antibody.

RELATED PRODUCTS:

Anti-BHLHE40 Polyclonal Antibody (Cat. No. A2333)
Anti-PER1 Polyclonal Antibody (Cat. No. A2328)
Anti-CSNK1E Polyclonal Antibody (Cat. No. A2334)
Anti-CLOCK Polyclonal Antibody (Cat. No. A2329)
Anti-ARNTL Polyclonal Antibody (Cat. No. A2330)

FOR RESEARCH USE ONLY! Not to be used on humans.