

# Anti-CRY1 Polyclonal Antibody

CATALOG NO.: **A2341-50 (50 µl)**  
**A2341-100 (100 µl)**

**BACKGROUND DESCRIPTION:** Cryptochrome-1 (CRY1) is a flavin adenine dinucleotide-binding protein that is a key regulator of the circadian clock. The circadian autoregulatory loop involves PERIOD heterodimers with cryptochrome proteins interacting with CLOCK/ARNTL. Disruptions in the CRY1 gene are associated with altered sleep patterns and sleep disorders.

**ALTERNATE NAMES:** Cryptochrome Circadian Clock 1; Cryptochrome-1; PHLL1; DSPD

**ANTIBODY TYPE:** Polyclonal

**HOST/ISOTYPE:** Rabbit / IgG

**IMMUNOGEN:** Recombinant full length human CRY1 protein

**PURIFICATION:** Immunogen affinity chromatography

**MOLECULAR WEIGHT:** 66 kDa

**FORM:** Liquid

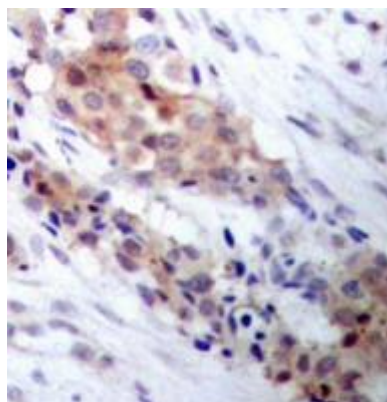
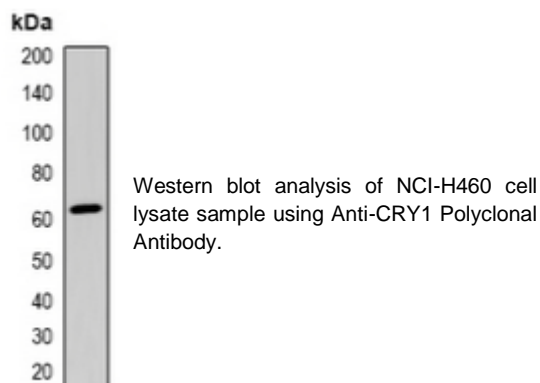
**FORMULATION:** In 0.42% potassium phosphate, 0.87% NaCl, pH 7.3, w/30% glycerol and 0.01% sodium azide

**SPECIES REACTIVITY:** Human

**STORAGE CONDITIONS:** Aliquot and store at -20 °C. Avoid repeated freeze-thaw cycles

**APPLICATIONS:** Western Blot: 1:500 to 1:2000 dilution; IHC: 1:50 to 1:200 dilution

This information is only intended as a guide. The optimal dilutions must be determined by the user



Immunohistochemistry analysis of human breast cancer tissue using Anti-CRY1 Polyclonal Antibody.

## RELATED PRODUCTS:

Anti-PER1 Polyclonal Antibody (Cat. No. A2328)  
 Anti-CLOCK Polyclonal Antibody (Cat. No. A2329)  
 Anti-BHLHE40 Polyclonal Antibody (Cat. No. A2333)  
 Anti-CSNK1E Polyclonal Antibody (Cat. No. A2334)  
 Anti-ARNTL Polyclonal Antibody (Cat. No. A2330)

**FOR RESEARCH USE ONLY! Not to be used on humans.**