

Anti-CRY2 Polyclonal Antibody

CATALOG NO.: **A2342-50 (50 µl)**
A2342-100 (100 µl)

BACKGROUND DESCRIPTION: Cryptochrome-2 (CRY2) is a flavin adenine dinucleotide-binding protein that is a key regulator of the circadian clock. The circadian autoregulatory loop involves PERIOD heterodimers with cryptochrome proteins interacting with CLOCK/ARNTL. Disruptions in the CRY2 gene are associated with altered sleep patterns and sleep disorders.

ALTERNATE NAMES: Cryptochrome Circadian Clock 2; Cryptochrome-2; HCRY2; PHLL2

ANTIBODY TYPE: Polyclonal

HOST/ISOTYPE: Rabbit / IgG

IMMUNOGEN: KLH conjugated synthetic peptide of Human CRY2 protein (amino acids 564 to 593)

PURIFICATION: Saturated Ammonium Sulfate (SAS) precipitation followed by dialysis against PBS

MOLECULAR WEIGHT: 67 kDa

FORM: Liquid

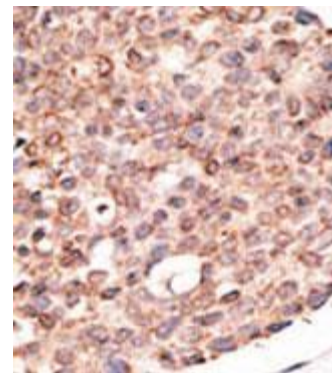
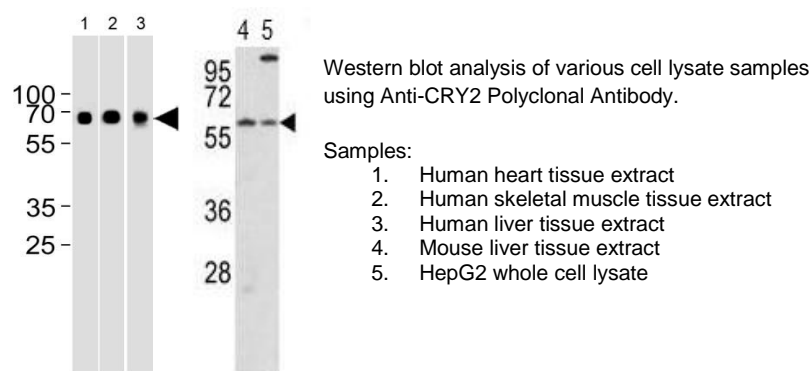
FORMULATION: In PBS with 0.09% sodium azide

SPECIES REACTIVITY: Human, Mouse

STORAGE CONDITIONS: Aliquot and store at -20 °C. Avoid repeated freeze-thaw cycles

APPLICATIONS: Western Blotting: 1:1000 dilution; IHC: 1:50 to 1:100 dilution

This information is only intended as a guide. The optimal dilutions must be determined by the user



Immunohistochemistry analysis of human breast cancer tissue sample using Anti-CRY2 Polyclonal Antibody.

RELATED PRODUCTS:

Anti-PER1 Polyclonal Antibody (Cat. No. A2328)
 Anti-BHLHE40 Polyclonal Antibody (Cat. No. A2333)
 Anti-ARNTL Polyclonal Antibody (Cat. No. A2330)
 Anti-CSNK1E Polyclonal Antibody (Cat. No. A2334)
 Anti-CLOCK Polyclonal Antibody (Cat. No. A2329)

FOR RESEARCH USE ONLY! Not to be used on humans

Gentaur Europe BVBA Voortstraat 49, 1910 Kampenhout BELGIUM
 Tel 0032 16 58 90 45 info@gentaur.com

