

# Anti-TIPIN Polyclonal Antibody

CATALOG NO.: **A2343-50 (50 µl)**  
**A2343-100 (100 µl)**

**BACKGROUND DESCRIPTION:** The TIMELESS interacting protein (TIPIN) is a part of the replisome complex, which supports DNA replication. TIPIN binds TIMELESS, which is involved in circadian rhythm regulation, and protects cells against DNA damage and stress.

**ALTERNATE NAMES:** TIMELESS Interacting Protein; CSM3 Homolog; FLJ20516

**ANTIBODY TYPE:** Polyclonal

**HOST/ISOTYPE:** Rabbit / IgG

**IMMUNOGEN:** Recombinant fusion protein of human TIPIN

**PURIFICATION:** Immunogen affinity chromatography

**MOLECULAR WEIGHT:** 50 kDa (observed)

**FORM:** Liquid

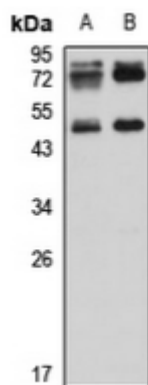
**FORMULATION:** In 0.42% potassium phosphate, 0.87% NaCl, pH 7.3, w/30% glycerol and 0.01% sodium azide

**SPECIES REACTIVITY:** Human, Mouse

**STORAGE CONDITIONS:** Aliquot and store at -20 °C. Avoid repeated freeze-thaw cycles

**APPLICATIONS:** Western Blotting: 1:500 to 1:2000 dilution

This information is only intended as a guide. The optimal dilutions must be determined by the user



Western blot analysis of **A)** HeLa and **B)** MCF7 whole cell lysate samples using Anti-TIPIN Polyclonal Antibody.

## RELATED PRODUCTS:

Anti-PER1 Polyclonal Antibody (Cat. No. A2328)  
 Anti-ARNTL Polyclonal Antibody (Cat. No. A2330)  
 Anti-CLOCK Polyclonal Antibody (Cat. No. A2329)  
 Anti-BHLHE40 Polyclonal Antibody (Cat. No. A2333)  
 Anti-CSNK1E Polyclonal Antibody (Cat. No. A2334)

FOR RESEARCH USE ONLY. Not to be used on humans