

Anti-MTNR1B Polyclonal Antibody

CATALOG NO.: **A2344-50 (50 µl)**
A2344-100 (100 µl)

BACKGROUND DESCRIPTION: The Melatonin Receptor 1B (MTNR1B) is one of two high affinity forms of receptor that binds melatonin, the primary hormone product of the pineal gland. MTNR1B is found primarily in the retina and brain, especially in the suprachiasmatic nucleus. MTNR1B is thought to mediate the reproductive and circadian actions of melatonin, as well as light-dependent functions in the retina.

ALTERNATE NAMES: Melatonin Receptor 1B; Mel1b Receptor; MEL1B; MEL-1B-R; FGQTL2; MT2

ANTIBODY TYPE: Polyclonal

HOST/ISOTYPE: Rabbit / IgG

IMMUNOGEN: KLH conjugated synthetic peptide of Human MTNR1B

PURIFICATION: Immunogen affinity chromatography

MOLECULAR WEIGHT: 40 kDa

FORM: Liquid

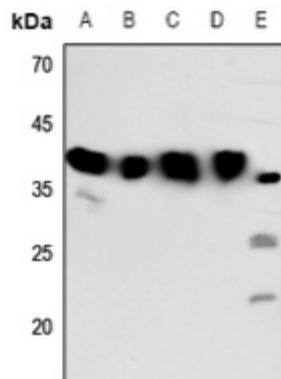
FORMULATION: In 0.42% potassium phosphate, 0.87% NaCl, pH 7.3, w/30% glycerol and 0.01% sodium azide

SPECIES REACTIVITY: Human, Mouse

STORAGE CONDITIONS: Aliquot and store at -20 °C. Avoid repeated freeze-thaw cycles

APPLICATIONS: Western Blotting: 1:500 to 1:1000 dilution

This information is only intended as a guide. The optimal dilutions must be determined by the user



Western blot analysis of **A)** HEK293T; **B)** HeLa; **C)** HepG2; **D)** H460; and **E)** mouse brain whole cell lysate samples using Anti-MTNR1B Polyclonal Antibody.

RELATED PRODUCTS:

Anti-NAMPT Antibody (14A5) (Cat. No. A1301)
 Phospho CREB (Ser129) Antibody (Cat. No. A1222)
 Anti-CREB1 Antibody (Cat. No. A1754)
 Phospho-CREB-1 (Ser133) Antibody (Cat. No. A1269)
 Anti-KDM5C / Jarid1C / SMCX Antibody (2E4-E1-G8) (Cat. No. A1308)

FOR RESEARCH USE ONLY. Not to be used on humans