

Anti-Phospho-AKT1 (Y315) / AKT2 (Y316) / AKT3 (Y312) Polyclonal Antibody

05/21

CATALOG NO.: **A2347-50 (50 µl)**
A2347-100 (100 µl)

BACKGROUND DESCRIPTION: The human AKT serine-threonine kinase family consists of three members (AKT1, AKT2, and AKT3) that are phosphorylated by phosphoinositide 3-kinase (PI3K) upon activation of cell membrane-associated signaling molecules such as receptor tyrosine kinases. AKT proteins regulate a wide variety of cellular functions including cell proliferation, survival, metabolism, and angiogenesis. Mutations in AKT are associated with multiple forms of cancer and hyperplasia.

ALTERNATE NAMES: PKB; Protein Kinase B; Protein Kinase B Beta; Protein Kinase B Gamma

ANTIBODY TYPE: Polyclonal

HOST/ISOTYPE: Rabbit / IgG

IMMUNOGEN: A phospho specific peptide corresponding to residues surrounding Y315 of human AKT1

PURIFICATION: Affinity purification

MOLECULAR WEIGHT: 56 kDa

FORM: Liquid

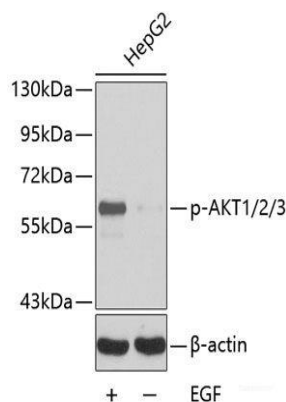
FORMULATION: In PBS with 0.02% sodium azide, 50% glycerol, pH 7.3

SPECIES REACTIVITY: Human

STORAGE CONDITIONS: Aliquot and store at -20 °C. Avoid repeated freeze-thaw cycles

APPLICATIONS: Western Blotting: 1:500 to 1:1000 dilution

This information is only intended as a guide. The optimal dilutions must be determined by the user



Western blot analysis of HepG2 whole cell lysate using Anti-Phospho-AKT1 / AKT2 / AKT3 Polyclonal Antibody. The band is detected only when HepG2 cells are stimulated with EGF (+) but not when unstimulated (-).

RELATED PRODUCTS:

Anti-AKT (PH domain) Rabbit Monoclonal Antibody (RM316) (Cat. No. A1835)
 Anti-Phospho-Akt (Ser473) Rabbit Monoclonal Antibody (Cat. No. A1119)
 AKT1 (T450) Antibody (CT) (Cat. No. 6743)
 AKT1 (Thr308) Antibody (Cat. No. 6472)
 Phospho-Akt2 (Ser474) Antibody (Cat. No. A1246)

FOR RESEARCH USE ONLY. Not to be used on humans

Gentaur Europe BVBA Voortstraat 49, 1910 Kampenhout BELGIUM
 Tel 0032 16 58 90 45 info@gentaur.com

