

# Anti-Phospho-AURKA (T288) / AURKB (T232) / AURKC (T198) Polyclonal Antibody

CATALOG NO.: A2351-50 (50 µl)  
 A2351-100 (100 µl)

**BACKGROUND DESCRIPTION:** The Aurora family of serine/threonine kinases is involved in the regulation of cell cycle progression. Aurora kinases regulate chromosome alignment and segregation during mitosis and meiosis through the formation and stabilization of microtubules at centrosomes and spindle poles. Aberrant expression of Aurora kinases is associated with several cancer cell lines, suggesting a role in tumor development and progression.

**ALTERNATE NAMES:** Aurora Kinase A; Aurora Kinase B; Aurora Kinase C; ARK1; ARK2; ARK3

**ANTIBODY TYPE:** Polyclonal

**HOST/ISOTYPE:** Rabbit / IgG

**IMMUNOGEN:** A phospho specific peptide corresponding to residues surrounding T288/T232/T198 of human AURKA/AURKB/AURKC

**PURIFICATION:** Affinity purification

**MOLECULAR WEIGHT:** Two bands observed at ~35 kDa and ~48 kDa

**FORM:** Liquid

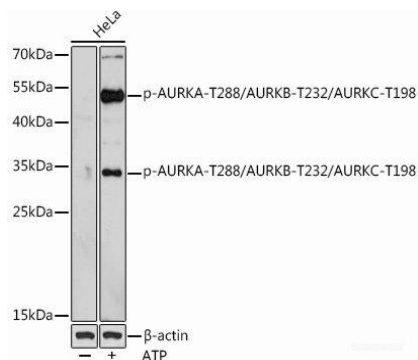
**FORMULATION:** In PBS with 0.02% sodium azide, 50% glycerol, pH 7.3

**SPECIES REACTIVITY:** Human

**STORAGE CONDITIONS:** Aliquot and store at -20 °C. Avoid repeated freeze-thaw cycles

**APPLICATIONS:** Western Blotting: 1:500 to 1:2000 dilution

This information is only intended as a guide. The optimal dilutions must be determined by the user



Western blot analysis of HeLa cell lysate sample using Anti-Phospho-AURKA / AURKB / AURKC Polyclonal Antibody. HeLa cells were either untreated (-) or treated with 5 mM ATP for one hour at 30 °C (+).

## RELATED PRODUCTS:

Anti-Aurora B Antibody (AURKB/1521) (Cat. No. A1433)  
 Anti-Aurora B Rabbit Monoclonal Antibody (Cat. No. A1606)  
 p53 Antibody (Cat. No. 3036R)  
 Phospho-p53 (Ser376) Antibody (Cat. A1158)  
 Anti-Phospho-ERK1/2 (Thr202/Tyr204) Antibody (Cat. A1589)

FOR RESEARCH USE ONLY! Not to be used on humans