

Anti-CD36 Polyclonal Antibody

CATALOG NO.: **A2352-50 (50 µg)**
 A2352-100 (100 µg)

BACKGROUND DESCRIPTION: The human CD36 protein serves as a receptor for thrombospondin in platelets and various cell lines, possibly functioning as a cell adhesion molecule. In addition, CD36 can bind to collagen, anionic phospholipids, and oxidized low density lipoproteins. CD36 may function in the regulation of the transport of fatty acids. Ligand binding to CD36 is associated with cellular responses such as angiogenesis, inflammatory response, and fatty acid metabolism.

ALTERNATE NAMES: CD36 Molecule; GP3B; GPIV; FAT; GP4; Platelet Glycoprotein 4; SCARB3; PAS-4

ANTIBODY TYPE: Polyclonal

HOST/ISOTYPE: Rabbit / IgG

IMMUNOGEN: Recombinant human CD36 (amino acids 191 to 376)

PURIFICATION: Protein G purification

MOLECULAR WEIGHT: 49 kDa

FORM: Liquid

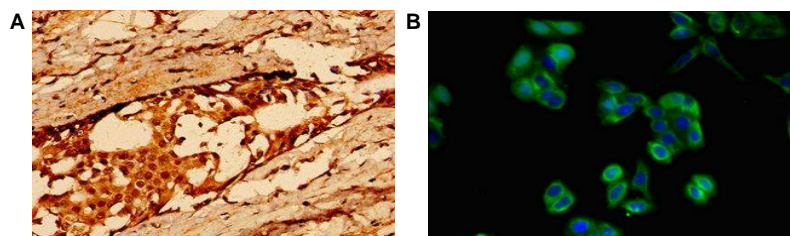
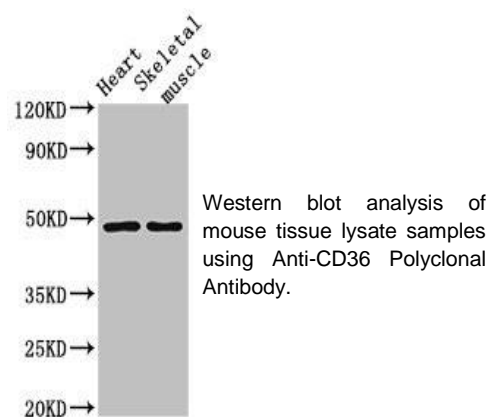
FORMULATION: In 0.01 M PBS, pH 7.4 with 50% glycerol and 0.03% Proclin 300

SPECIES REACTIVITY: Human, Mouse

STORAGE CONDITIONS: Aliquot and store at -20 °C. Avoid repeated freeze-thaw cycles

APPLICATIONS: Western Blot: 1:500 to 1:5000 dilution; IHC: 1:20 to 1:200 dilution; IF: 1:50 to 1:200 dilution

This information is only intended as a guide. The optimal dilutions must be determined by the user



Anti-CD36 Polyclonal Antibody was used to perform **A)** immunohistochemistry analysis of human breast cancer tissue and **B)** immunofluorescence analysis of HepG2 cells.

RELATED PRODUCTS:

Anti-Phospho-AMPK alpha 1/2 (Thr183/172) Polyclonal Antibody (Cat. No. A2348)
 Citrullinated Fibrinogen Monoclonal Antibody (Clone 10E9.3) (Cat. No. A2316)
 Anti-IL-18 Polyclonal Antibody (Cat. No. A2337)
 Anti-Pyruvate Dehydrogenase E2 Polyclonal Antibody (Cat. No. A2336)
 Anti-CD161/KLRB1 Antibody (A2309)

FOR RESEARCH USE ONLY! Not to be used on humans.