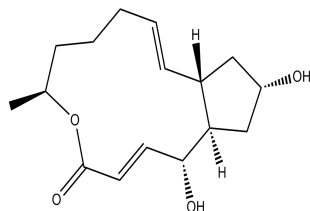


Brefeldin A

CATALOG #: 1560-5, -50

AMOUNT: 5 mg, 50 mg

STRUCTURE:

MOLECULAR FORMULA: C₁₆H₂₄O₄

MOLECULAR WEIGHT: 280.4

PURITY: ≥99%

CAS NUMBER: 20350-15-6

APPEARANCE: Powder form

SOLUBILITY: Soluble in DMSO or ethanol

STORAGE CONDITIONS: -20°C in the dark

BACKGROUND: Brefeldin A has been shown to induce apoptosis in human tumor cells through caspase activation. It has also been shown to block translocation of proteins from the endoplasmic reticulum to the Golgi apparatus.

CAUTION: Toxic. Do not ingest, swallow, or inhale. Do not get in eyes or on skin. Care should be taken to prevent contact through all routes of exposure. Detail toxicity information is not available at this time.

RELATED PRODUCTS:

Actinomycin D (Cat. No. 1036-50, 50MG, 5MG)

Anisomycin (Cat. No. 1549-10)

BAM7 (Cat. No. 2451-5, 25)

Berberine chloride (Cat.No. 1830-100, 500)

Brefeldin A (Cat. No. 1560-5, 50)

Camptothecin (Cat. No. 1039-1, 100, 50MG, 500MG)

Carboplatin (Cat. No. 1553-100)

Colchicine (Cat. No.1519-1000)

Cycloheximide (Cat. No. 1041-1, 1G)

Cyclosporine A (Cat. No. 1522-100)

Daunorubicin HCl (Cat. No. 1524-10, 50, 500)

Dexamethasone (Cat. No. 1042-1, 1G, 10G)

Doxorubicin HCl (Cat. No. 1527-5)

Etoposide (Cat. No. 1043-100, 25Mg, 250MG)

Gambogic acid (Cat. No. 2785-5, 25)

LY573636 (Cat. No. 2297-5, 25)

PAC-1 (Cat. No. 1654-10)

Ready-to-Use Apoptosis Inducer Set (Cat. No. K121-5)

FOR RESEARCH USE ONLY! Not to be used in humans.