

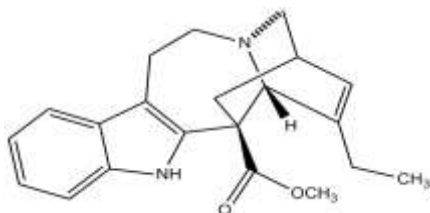
## Catharanthine

**ALTERNATE NAME:** Methyl (2 $\alpha$ ,5 $\beta$ ,6 $\alpha$ )-3,4-didehydroibogamine-18  $\beta$ -carboxylate ; 6,9-Methano-5H-pyrido[1',2':1,2]azepino[4,5-b]indole

**CATALOG #:** 1749-100, 1G

**AMOUNT:** 100 mg, 1 g

**STRUCTURE:**



**MOLECULAR FORMULA:** C<sub>21</sub>H<sub>24</sub>N<sub>2</sub>O<sub>2</sub>

**MOLECULAR WEIGHT:** 336.43

**CAS NUMBER:** 2468-21-5

**APPEARANCE:** White crystalline solid

**SOLUBILITY:** DMSO

**PURITY:**  $\geq$ 98% by HPLC

**STORAGE:** Store at -20°C

**DESCRIPTION:** Catharanthine is one of the alkaloids isolated from the plant *Catharanthus roseus*. It stimulates the release of amylase from pancreatic fragments and causes extensive degranulation of pancreatic acinar cells with accumulation of membrane material in the Golgi region. It also fully inhibits nicotinic receptor mediated diaphragm contractions (IC<sub>50</sub> = 59.6  $\mu$ M).

**HANDLING:** Do not take internally. Wear gloves and mask when handling the product! Avoid contact by all modes of exposure.

### RELATED PRODUCTS:

- Amylase Assay Kit (**Cat. No. K711-100**)
- Paclitaxel (**Cat. No. 1567-25**)
- Rat Pancreatic Amylase Antibody (**Cat. No. 3102-100**)

**FOR RESEARCH USE ONLY! Not to be used on humans.**