

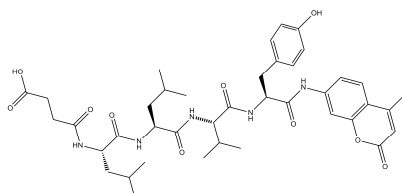
Suc-Leu-Leu-Val-Tyr-AMC

ALTERNATE NAME: Suc-LLVY-AMC; Proteasome Substrate; Calpain Substrate

CATALOG #: 1833- 5,25

AMOUNT: 5 mg, 25

STRUCTURE:



MOLECULAR FORMULA: C₄₀H₅₃N₅O₁₀

MOLECULAR WEIGHT: 763.88

APPEARANCE: Lyophilized solid

SOLUBILITY: DMSO

PURITY: ≥98% by HPLC

STORAGE: Store at -20 °C

DESCRIPTION: A widely used fluorogenic substrate for 20S proteasome, calpains and other chymotrypsin-like proteases. Cleavage of this AMC peptide by the enzymes generates strongly fluorescent AMC that is monitored fluorometrically.
 λ_{ex} : 340 - 360 nm; λ_{em} : 440 - 460 nm.

HANDLING: Do not take internally. Wear gloves and mask when handling the product! Avoid contact by all modes of exposure.

RELATED PRODUCTS:

Aclacinomycin A (Cat. No. 2032-5, 25)

Calpain Inhibitor I, ALLN (Cat. No. 1834-5, 25)

Calpain Inhibitor II, ALLM (Cat. No. 1834-5, 25)

Clasto-Lactacystin β -Lactone (Cat. No. 1710-100)

Carfilzomib (Cat. No. 2385-5, 25)

CEP-18770 (Cat. No. 2433-5, 25)

E6AP Antibody (Cat. No. 3744-100)

(-)-Epigallocatechin gallate (Cat. No. 1841-50)

Fenbendazole (Cat. No. 2157-100, 500)

Isopeptidase T (short form), human recombinant (Cat. No. 4861-25)

Isopeptidase T (long form), human recombinant (Cat. No. 4862-25)

Lactacystin (Cat. No. 1709-200)

MG-115 (Cat. No. 1831-1, 5)

EZSolution™ MG-115 (Cat. No. 2144-1)

MG-132 (Cat. No. 1703-5, 25)

Oprozomib (Cat. No. 2386-5, 25)

PS-341 (Cat. No. 1846-1,5)

EZSolution™ MG-132 (Cat. No. 1791-5)

Proteasome Activity Assay Kit (Cat. No. K245-100)

Proteasome Substrate, Fluorogenic (Cat. No. 1832-1, 5)

PYR-41 (Cat. No. 1925-5, 25)

PS-341 (Cat. No. 1846-1, 5)

EZSolution™ PS-341 (Cat. No. 2145-1)

Suc-Leu-Leu-Val-Tyr-AMC (Cat. No. 1833-5)

FOR RESEARCH USE ONLY! Not to be used on humans.