

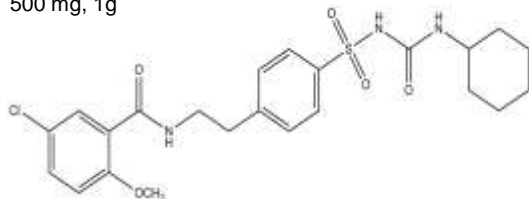
Glibenclamide

ALTERNATE NAME: 5-Chloro-N-[4-(cyclohexylureidosulfonyl)phenethyl]-2-methoxybenzamide; Glyburide, N-*p*-[2-(5-Chloro-2-methoxybenzamido)ethyl]benzenesulfonyl-N'-cyclohexylurea

CATALOG #: 1878-500, 1000

AMOUNT: 500 mg, 1g

STRUCTURE:



MOLECULAR FORMULA: C₂₃H₂₈ClN₃O₅S

MOLECULAR WEIGHT: 494.0

CAS NUMBER: 10238-21-8

APPEARANCE: White to off-white solid

SOLUBILITY: DMSO (100 mM) or EtOH (5 mM)

PURITY: ≥99% by HPLC

STORAGE: Store at 2-8°C

DESCRIPTION: Cell-permeable. An anti-diabetic agent. ATP-sensitive potassium channel (K_{ATP}) blocker. Inhibits K_{ATP} currents in the pancreatic beta cells causing an increase in intracellular Ca²⁺ and insulin secretion.

HANDLING: Do not take internally. Wear gloves and mask when handling the product! Avoid contact by all modes of exposure.

FOR RESEARCH USE ONLY! Not to be used on humans.

RELATED PRODUCTS:

- Ciglitazone (Cat. No. 1695-5)
- Metformin, Hydrochloride (Cat. No. 1691-5G)
- Pioglitazone Hydrochloride (Cat. No. 1877-5, 25)
- Rosiglitazone (Cat. No. 1559-5, 50, 100)
- Troglitazone (Cat. No. 1696-5)