

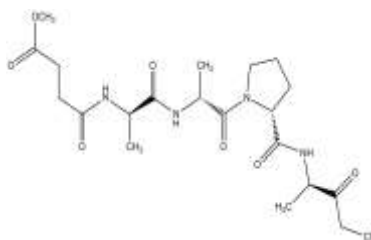
Elastase Inhibitor

ALTERNATE NAME: MeOSuc-Ala-Ala-Pro-Ala-chloromethylketone; MeOSuc-AAPA-CMK

CATALOG #: 1922-5

AMOUNT: 5 mg

STRUCTURE:



MOLECULAR FORMULA: C₂₀H₃₁ClN₄O₇

MOLECULAR WEIGHT: 474.94

CAS NUMBER: 111682-13-4

APPEARANCE: White solid

SOLUBILITY: DMSO

PURITY: ≥98% by TLC

STORAGE: Store at -20 °C

DESCRIPTION: A potent, irreversible inhibitor of human neutrophil elastase (HNE). The structure of the enzyme-inhibitor complex reveals crosslinking of the catalytic residues His-57 and Ser-195 by the peptidyl chloromethylketone.

HANDLING: Do not take internally. Wear gloves and mask when handling the product! Avoid contact by all modes of exposure.

FOR RESEARCH USE ONLY! Not to be used on humans.

RELATED PRODUCTS:

- Elastase, Human Neutrophil (Cat. No. 4716-100)
- Elastase Inhibitor, SPCK (Cat. No. 1921-5)
- Elastase Inhibitor (Cat. No. 1922-5)