

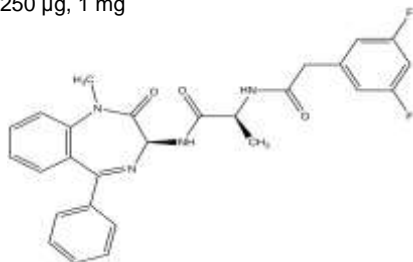
Compound E

ALTERNATE NAME: (2S)-2-([(3,5-Difluorophenyl)acetyl]amino)-N-[(3S)-1-methyl-2-oxo-5-phenyl-2,3-dihydro-1H-1,4-benzodiazepin-3-yl]propanamide

CATALOG #: 1949-250, 1000

AMOUNT: 250 µg, 1 mg

STRUCTURE:



MOLECULAR FORMULA: C₂₇H₂₄F₂N₄O₃

MOLECULAR WEIGHT: 490.50

CAS NUMBER: 209986-17-4

APPEARANCE: White to off-white solid

SOLUBILITY: DMSO (~10 mg/ml)

PURITY: ≥98% by HPLC

STORAGE: Store at -20 °C. Protect from light and air

DESCRIPTION: Cell-permeable. A potent, selective, non-transition state and non-competitive inhibitor of γ-secretase (IC₅₀ = 0.3 nM for total β-amyloid) and Notch processing. At higher concentrations (20-400 µM), only weakly affects the presenilase activity.

REFERENCE: Grimwood, S., *et al.* (2005). *Neuropharmacology* **48**, 1002-1011.

HANDLING: Do not take internally. Wear gloves and mask when handling the product! Avoid contact by all modes of exposure.

FOR RESEARCH USE ONLY! Not to be used on humans.

RELATED PRODUCTS:

- APP Antibody (**Cat. No. 6001-100**)
- Beta-Secretase, human recombinant (**Cat. No. 7604-20, 100, 1000**)
- Beta-Secretase Activity Assay Kit (**Cat. No. K360-100**)
- Beta Secretase Inhibitor I (**Cat. No. 7501-1**)
- Beta Secretase Inhibitor II (**Cat. No. 7502-1**)
- Compound 34 (**Cat. No. 1898-200, 1000**)
- L-685, 258 (**Cat. No. 1713-250**)